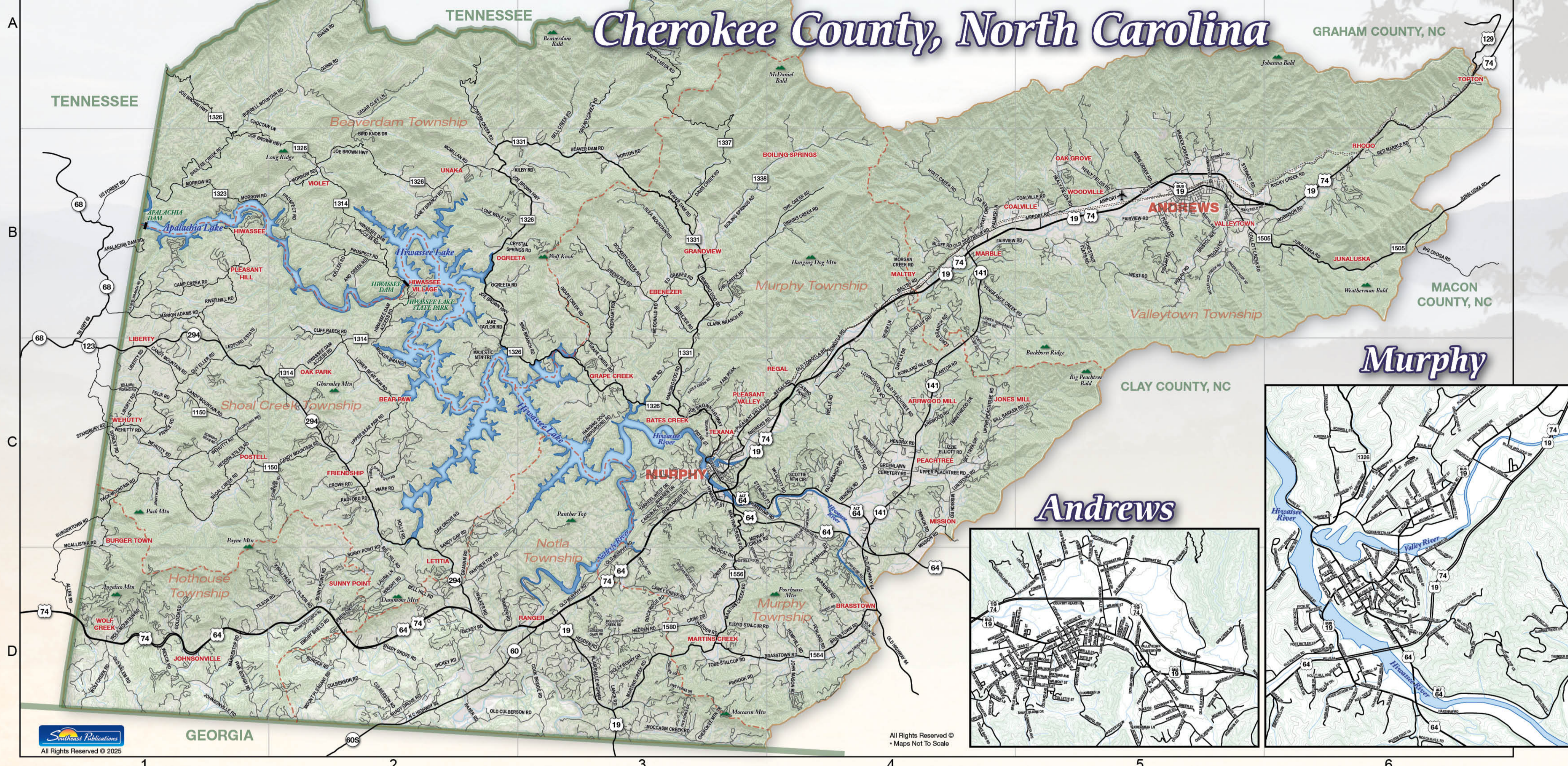


# Cherokee County, North Carolina



Name	Grid Locations	Name	Grid Locations	Name	Grid Locations	Name	Grid Locations																								
AIRPORT RD.	B5	CROWD RD.	C2	JOE BROWN HIGHWAY	C3	KILBY RD.	B2	LONG BRANCH RD.	C4	MARTINS CREEK	D3	MCCASIN CREEK RD.	D3	OGREETA RD.	B2	PALMER LN.	B4	PISGAH RD.	B5	RANGER	D3	ROCKBRIDGE RD.	D3	SKY TREE DR.	C4	TIMBERWOOD DR.	C4	US FOREST RD.	B1	WEHUTTY RD.	C1
ALLEN CEMETERY RD.	C2	DAVIS CREEK RD.	A3B3	JOHNSONVILLE	D1	LAURA LN.	D2	LOWER BEAR PAW RD.	C2	MCCLELLAND CREEK RD.	D1	MOUNT PLEASANT RD.	B5	MOUNT PLEASANT RD.	B5	MOUNT PLEASANT RD.	B5	MOUNT PLEASANT RD.	B5	MOUNT PLEASANT RD.	B5	MOUNT PLEASANT RD.	B5	MOUNT PLEASANT RD.	B5	MOUNT PLEASANT RD.	B5	MOUNT PLEASANT RD.	B5	MOUNT PLEASANT RD.	B5

## Lakes

**Apalachia Lake**  
Apalachia Lake is a small, deep, cool-water reservoir nestled in the western North Carolina mountains. The reservoir in its entirety is located solely within Cherokee County. The dam was designed and built to generate hydroelectric energy during World War II. Adjacent to the Nantahala National Forest, the reservoir has very little private shoreline development and NO commercial recreation facilities. Apalachia is one of the most pristine lakes of unparalleled beauty offering fishing, canoeing, hiking and primitive camping recreation areas. Because of the remote location, relatively few anglers use the reservoir. Sport fish include smallmouth bass, spotted bass, largemouth bass, redear sunfish and white bass.

**Hiwassee Lake**  
Hiwassee Lake is located on the Hiwassee River, stretching 22 miles through western North Carolina. Surrounded by the Nantahala and Cherokee National Forests, it is upstream from Lake Apalachia. With three marinas and numerous public access points, including Hanging Dog Recreation Area, Hiwassee Lake is easy to enjoy. Its location makes it an exceptionally beautiful location for recreation and serves as a rich habitat for deer, wild turkey and other wild animals. The flow of water in this reservoir comes from deep below the surface and can be refreshing even on the warmest summer day.

## Rivers

Rivers in and near Cherokee County include the Hiwassee, Valley, Nottley, Ocoee and Nantahala. The Hiwassee River is approximately 147 miles long. Its headwaters are in North Georgia but it flows through Cherokee County turning westward to Tennessee, ultimately flowing into the Tennessee River. The Valley River begins as a pair of springs from within the Snowbird Mountains and flows southwest into the Hiwassee River. The town of Murphy is situated at the confluence of the Hiwassee and Valley Rivers. The rivers are a popular source of outdoor adventure, including white water rafting, kayaking, canoeing and fishing.

## Community Parks

**Murphy River Walk - Murphy, NC**  
Murphy River Walk is a wonderful 4 mile greenway that follows the Hiwassee River and Valley River which meet and surround the historic town center of Murphy, NC. NEW 2018! - an exciting new addition to lengthen the River Walk. Along the walkway there are picnic areas with BBQ grills, a fishing pier that protrudes out over the river, as well as swings that are placed under the shaded trees that allow you to sway back and forth while enjoying the wildlife and soothing sounds of the river.

**Konehete Park - Murphy, NC**  
Presently the facility includes a riverwalk, baseball fields, soccer field, tennis courts, zero entry pool featuring a removable dome and gym complex. In addition there is a playground and picnic area. A large lighting system allows a variety of night activities and sports.

**Disc Golf Course - Andrews, NC**  
Heritage Park Disc Golf Course lies in the heart of the Andrews Valley, nestled between the Valley River Mountains to the south and the Snowbird Mountains to the north. The Valley River runs along several of the holes creating a challenging, yet beautiful atmosphere.

## Important Numbers

**When calling long distance use area code (828) unless noted County Services**

- All County Emergency Services..... 911
- Cherokee County Board of Elections..... 837-6670
- Cherokee County Building Inspector..... 837-6730
- Cherokee County Health Department..... 837-7486
- Cherokee County License Plate Agency..... 837-9922
- Cherokee County Schools..... 837-2722
- Cherokee County Sheriff's Department..... 837-2589
- Cherokee County Social Services..... 837-7455

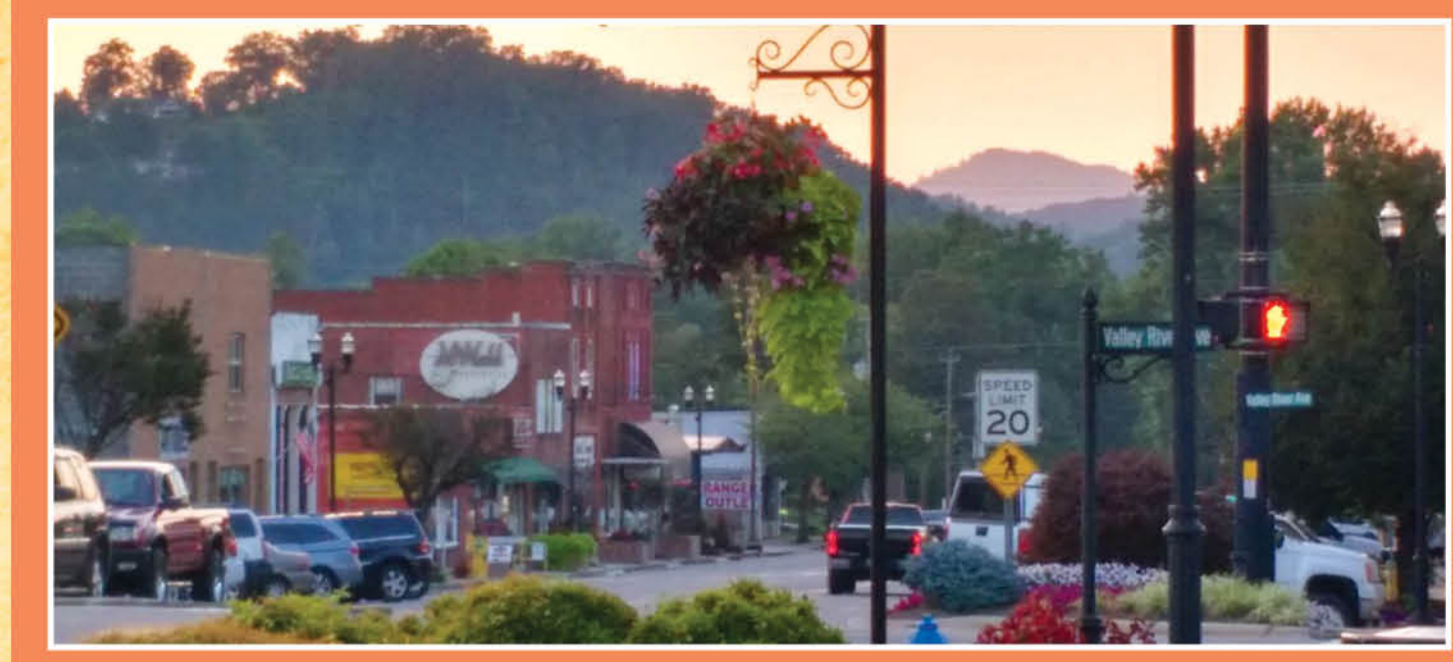
**United States Post Offices**

- Andrews..... 321-4208
- Brasstown..... 837-5046
- Culberson..... 644-5131
- Marble..... 837-5604
- Murphy..... 837-6214
- Topton..... 321-5501

**Hospitals**

- Erlanger Western Carolina Hospital Medical Center..... 837-8161
- Murphy Urgent Care..... 837-4712
- King's Quick Care..... 321-8035

## Murphy, North Carolina



**Overview**  
Murphy is a town and the county seat of Cherokee County, North Carolina, United States. It is situated at the confluence of the Hiwassee and Valley rivers. It is the westernmost county seat in the state of North Carolina, approximately 360 miles (580 km) from the state capital in Raleigh. The population of Murphy was 1,627 at the 2010 census.

**History**  
The site of Murphy, along the Hiwassee River, was known to the Cherokee as Tanasi-yi (the Leech Place), because of a legend about a giant leech named Tanasi that lived in the river there.

The Trading Path (later called the "Unicoi Turnpike") passed by the future site of Murphy, connecting the Cherokee lands east of the mountains with the "Overhill Towns" of Tennessee.

The town was first called by the name of "Huntington" in the 1820s through the 1830s, when the first post office, operated by Col. Archibald Russell Spence Hunter, was established. He was also the first white settler to build a frame house in the Cherokee Territory, later Cherokee County.

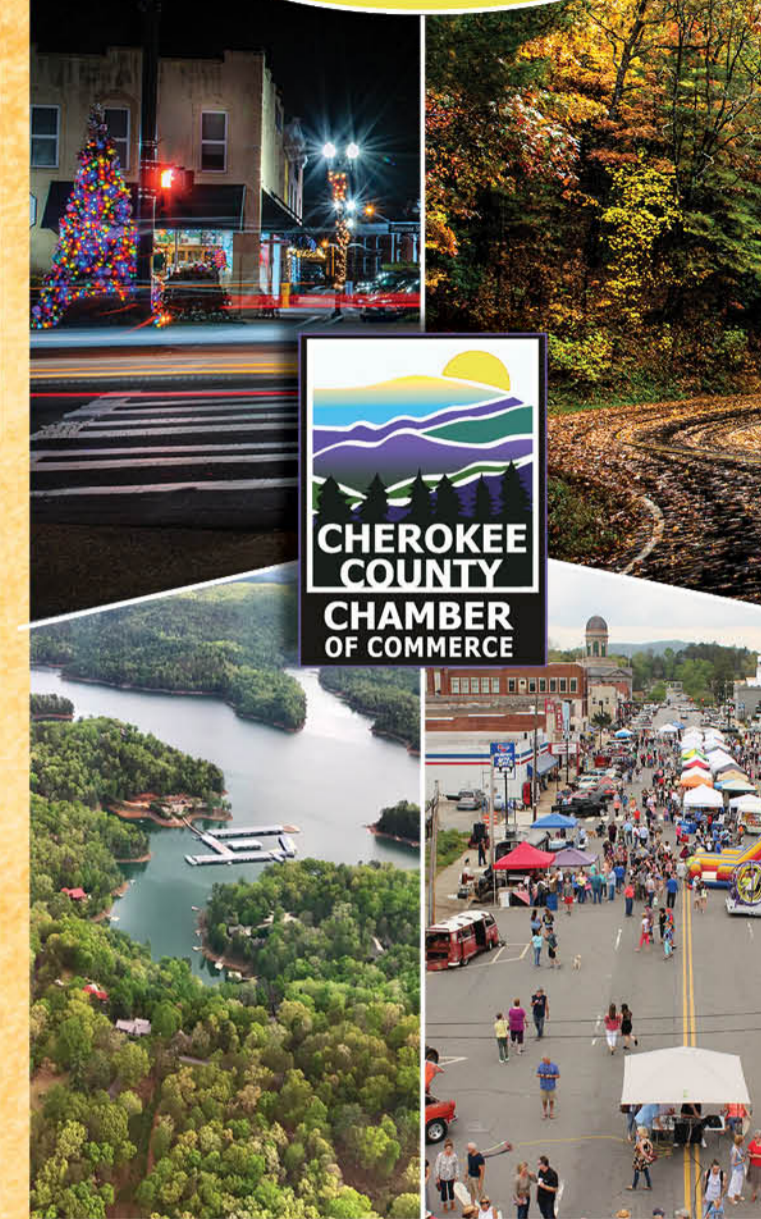
In 1836, during the Cherokee removal known as the Trail of Tears, the United States army built Fort Butler in what is today Murphy. Fort Butler acted as the main collection point for Cherokee east of the mountains. From Fort Butler the Cherokee were taken over the mountains on the Unicoi Turnpike to the main internment camps at Fort Cass (today Charleston, Tennessee). Today the Unicoi Turnpike is known as the Joe Brown Highway. Fort Butler is no longer a structure, but the site can be visited with historical markers to read. The Cherokee County Historical Museum located in Murphy provides information about the Trail of Tears.

Cherokee County was formed in 1839 from a portion of Macon County, but Murphy wasn't incorporated as the county seat until 1851.

Murphy was once the terminus of the two train lines. The Mineral Bluff Gap spur line (LBN Railroad) came out of North Carolina at the Murphy Branch (Southern Railroad) came from Asheville. The LBN line was removed in the mid-1980s. The tracks for the Murphy Branch remain but are inoperable. It has been idle since the mid-1990s when the Great Smoky Mountain Railroad discontinued service between Murphy and Andrews. The LBN Depot remains as a community center just southwest of downtown Murphy. Murphy was the home of the once well-known crafts manufacturer Margaret Souders, which operated a nationwide chain of gift stores for its woodcraft products and housewares, such as lazy Susans and gift trays.

# Cherokee

County Guidebook  
2025-2026



805 US Hwy 64 West • Murphy, NC 28906  
828.837.2242  
www.CherokeeCountyChamber.com

## Historic Finds

**John C. Campbell Folk School - Brasstown, NC**  
A treasured resource for traditional music, dance, crafts and folk lore, the campus has many historic buildings, beautiful trails and a rich art community focused on creative and fun learning experiences.

**Cherokee County Courthouse - Murphy, NC**  
The courthouse was built of locally quarried stone from the nearby community of Marble, NC. It is a uniquely regal blue marble gem located in the historic downtown Murphy.

**Cherokee County Historical Museum:**  
The Cherokee County Historical Museum in Murphy, North Carolina displays the rich history of Native American and pioneer settlers in the far-western corner of the state. The museum is housed in a historic Carnegie Library building in downtown Murphy.

**John Franklin Cobb House - Bellvue, NC (US191/129)**  
The John Franklin Cobb House, or Cobb Plantation, near the North Carolina-Georgia line in Franklin County was built as a log cabin in 1865, making it one of the few surviving pre-Civil War structures in Cherokee County. Since the 1880s the logs have been covered with weatherboarding. Numerous rooms have also been added to the cabin since the 1870s in a rather haphazard manner. The house remained in the Cobb family until 1977. John Franklin Cobb (1837-1911) was a farmer and local magistrate, with an estate of 150-200 mostly wooded acres. He married Sarah Waldrop (1837-1921) in 1863, shortly after his discharge from Confederate service. They had six children born between 1863 and 1880. Among their grandchildren was Tyus Raymond Cobb (1886-1961). As a teenager, Cobb often spent summers with his grandparents who unlike his parents encouraged him to play baseball. Though his parents lived in Georgia and he himself was known as the "Georgia Peach," Ty Cobb gained his earliest baseball experience on the playing fields of Murphy and Andrews in Cherokee County, North Carolina.

**Robert Lafayette Cooper House - Murphy, NC**  
The Robert Lafayette Cooper House is a historic house located at 109 Campbell Street. The two story wood frame house was built in 1881, and is one of the finest Queen Anne Victorian houses in Cherokee County. The house was built by Robert Lafayette Cooper, a successful local lawyer, as a wedding present for his wife.

**Franklin Pierce Cooper House - Andrews, NC**  
The 2-1/2 story brick Queen Anne Victorian was built in 1900 and is a remnant of Andrews' industrial heritage. The house was built by Franklin Pierce Cooper, owner of a local tannery. The handsome Queen Anne style brick structure is one of the few historic residences remaining. A small frame tenant house or servant house, built on a saddlebag plan and dating from the period of the main house construction, survives on the property. A wash house originally associated with the main house is now on the adjacent property.

**First Baptist Church - Andrews, NC**  
The former First Baptist Church, now referred to as the Valleytown Cultural Arts Center, is a historic Baptist church building at 101 Chestnut Street in Andrews. The Classical Revival brick structure was built in 1923 for a congregation founded in 1902; it was their second building on the site. It was used by the congregation until 1987.

**Harshaw Chapel and Cemetery - Murphy, NC**  
Located at Church and Central Streets, Harshaw Chapel is a small vernacular Greek Revival brick church, built in the 1860s as the first Methodist congregation in Murphy. The church building was donated by Joshua Harshaw, a prominent early settler in the county. The site of the church and surrounding cemetery had been donated by Harshaw in 1844, long before he had purchased the land in the Indian land sales. The small church was replaced by the congregation in the 1820s and its subsequent survival is remarkable in that it has received little use since. It is the oldest church building in Cherokee County, and is the oldest structure surviving relatively intact in Murphy. Harshaw Chapel is also the sole surviving example of a mid-nineteenth century brick architecture in the county. The church is surrounded by a cemetery containing the graves of many locally prominent citizens and a collection of notable Victorian grave markers.

**Walker's Inn - Andrews, NC**  
Built in 1840, the original log structure contained two rooms on the ground floor and two rooms above with a total of 18 beds. The inn was destroyed by fire in 1864 but the house had been expanded to its present state. Wrought iron door hinges, antique door latches, ceiling beams and bubble glass windows are a few of the unique and original features of this historic inn. The Walker Inn is an original structure located in the town of Asheville and Murphy located south of Andrews on SR 1505 off SR 193 and NC 19.

## Outdoor Recreation

Cherokee County is a center for outdoor recreation because of our location. Cherokee County is located within Nantahala National Forest with the Chattoahoochee National Forest and Great Smoky Mountain National Park close by.

**Biking/Hiking**  
Our public lands offer more than 245 miles of bike trails. In addition, forest roads are also open for mountain biking, unless otherwise signed. The Ramsey Bluff Bike Trail System is located at the Hanging Dog Campground area, and offers under-utilized adventure in mountain biking, hiking, and cross-country running. The eight mile labyrinth of trails is actually a group of connected loops, allowing an interesting variety of combinations for repeat visitors to explore. The trail difficulty ranges from easy to moderate, and range from 1500 to 1900' in elevation. The trail system has two good access points with parking: the Upper Park area above the Boat Launch, and Iceberg Hill on Ramsey Bluff Road. Restrooms are near the Boat Launch trailhead.

**Piney Knob Trail System**  
The Piney Knob Trail System, 22.3 miles of recreational hiking and mountain biking trails on the 700+ acre Murphy Watershed property is off of Piney Knob Hill Road. All trails are dirt single-track trails and built in accordance with International Mountain Bike Association (IMBA) standards.

**Camping**  
Cherokee County offers a plethora of camping options. Whether its tenting under the stars or tucked away in a luxury RV with all the amenities, this is the perfect camping destination. Carriage Hills Farm Equine Camping, Murphy Peace Valley KOA, Pestinnom Campground, Valley River RV Resort, and WagonMaster Adventure Ranch provide quality camping options.

**Hunting**  
Many game animals, including white-tailed deer, black bear, wild turkey, ruffed grouse and gray squirrel, thrive in the forest. The Forest Service provides a variety of hunting opportunities, including accessible hunting in the following areas: Where there are fields adjacent to a short distance from the road: Park Road; Deep Gap Road; Fries Creek Road; Nelson Ridge Road; Tum Gap Road; Beech Creek Road; Panther Top Road; Powertown Cove Road; Copper Creek Road; and Davis Creek Road. Parking is available in wide areas along the roads.

**Fishing**  
Our public lands are a haven for fishing. Cold water, mountain streams are prime habitat for brown, rainbow and native brook trout. All national forest streams are "wild trout waters," unless classified and posted otherwise. With several trout streams, Cherokee County has become a popular place for fly fishing. Trout fishing season lasts from April - February, which makes it a great activity for almost any time of the year. For the angler looking for spotted bass, striped bass, hybrid, walleye, crappie, catfish, bluegill, large or smallmouth bass, Lake Hiwassee, Lake Cherokee, or Apalachia Lake offer those varieties. If you need gear, visit Shoe's Marina, Duke's Hideaway or Mountain View Marina to rent a boat or utilize a guide service like Big Ol' Fish Guide Service or Apalachia Lake Tours.

**Whitewater Rafting**  
With two world class rivers within a few miles of Cherokee County, rafting, canoeing and kayaking is a great family activity. The Ocoee River - just across the border in Tennessee with class III to IV rapids - played host to the 1996 Summer Olympics and boasts a number of professional rafting companies. For a slightly slower pace by the Nantahala River to the north of Cherokee County, this class II and III river is family friendly with self-guided rafts and kayaks available for rent. Of course the Nottely River, the Hiwassee River and Valley River along with many lesser tributaries are available for canoeing, boating or tubing. If you need equipment or prefer a guide, try using Carolina Outfitters, Rolling Thunder River Company Nantahala Outdoor Center or Carolina Ocoee.

## Welcome to Cherokee County, NC

Cherokee County is geographically the most southwestern county in all of North Carolina. It encompasses the communities of Andrews, Brasstown and Murphy.

Visitors and residents alike agree that the natural beauty of the mountains, lakes, rivers and abundant wildlife are some of the best things about Cherokee County. These natural features lend this area to a variety of outdoor activities like hiking, mountain biking, and whitewater rafting, to name a few.

Cherokee County is bordered by both Tennessee and Georgia, making it only a two hour drive from several cities: Chattanooga, TN; Knoxville, TN; Atlanta, GA; and Asheville, NC. The location makes it the perfect drivable getaway offering a quiet escape with a naturally picturesque backdrop.

The friendly faces of Cherokee County make it one of the most friendly places to live and visit. Many visitors have chosen to relocate to our area because of the generous and heart-warming spirit lived daily by our residents.

Come make Cherokee County, NC your most recently visited destination. You will be happy you did!

**Help Keep America BEAUTIFUL!**

**PEACHTREE FIBER** Stay Connected  
No Matter Where You are...

**828-837-7118**

High-Speed Internet  
HD Cable TV  
Phone Services

peachtreefiber.com  
Locally Owned & Operated

**Carolina Mountain Homes**  
Sales Listings Rentals

5530 West US Hwy 64 Murphy, NC 28906

Real Estate since 1978

**www.CarolinaMtnHome.com**  
**www.CMHRentals.com**

**828-837-7322**  
Licensed in NC and GA

**ROSE INSURANCE**  
FOR ALL YOUR MEDICARE NEEDS  
Also Business, Home, Auto, Farm, Barn, Life, Health Insurance

ANNE C. ROSE  
AGENT

828-837-3697 or 888-723-6872  
Roseins@frontier.com • 620 Hill Street • Murphy, NC 28906

**Dex Hubbard**  
THE MOUNTAIN REALTY GROUP

1151 US 64 West, Murphy, NC 28906  
Each Office Independently Owned and Operated

**828-361-4710**

Bringing real estate and Murphy, NC together

**MURPHY'S CHOPHOUSE**

Open for lunch, dinner and Sunday brunch. Owned by renowned chef James Reaux. Serving top quality meats and seafood with an extensive wine list, full bar, and craft beer selections.

130 VALLEY RIVER AVE, MURPHY  
MURPHYCHOPHOUSE.COM  
FOR RESERVATIONS: (828) 835-3287

**MOUNTAIN CREDIT UNION**

Serving Western North Carolina Since 1963!

8005 NC Highway 141  
Marble, NC 28905  
828-837-0460  
www.mountaincu.org

Mountain CREDIT UNION

**MUSICAL AND PERFORMING ARTS EVENT VENUES WITH REGULAR PERFORMANCES:**

Georgia Mountain Fairgrounds John C. Campbell Folk School Peacock Performing Arts Center	Stecoah Valley Cultural Center Young Harris College Theatre Program Young Harris College Planetarium	Valleytown Cultural Arts And Historical Association Cherokee Historical Association
--	--	--

RECURRING EVENTS:			COMMUNITY EVENTS AND FESTIVALS:		
Community Craft Night	Andrews, NC	Tuesdays	Fire in the Valley Chili Cook-Off	Andrews, NC	January
Valley River Yarn	Andrews, NC	Every Tuesday 9 - 11 am	Black History Month at Cherokee County Arts Council	Murphy, NC	February 2026
Coffee With Veterans	Andrews, NC	Wednesdays 10:30 am	Welcome Home Veterans Event: A Tribute To All Who Serve	Andrews, NC	April 18, 2026
Storytime: Andrews Public Library	Andrews, NC	Wednesdays 10:30 am	Andrews Spring Festival	Andrews, NC	April 25, 2026
Trivia Night At Happy Trout	Andrews, NC	Thursdays 7:30 - 9:30 pm	Cherokee/Clay Senior Olympics and Silver Arts	TBD	TBD April-May 2026
Locals Night Out at Ferncrest Winery	Andrews, NC	Thursdays 7:30 - 9:30 pm	Murphy Spring Festival	Murphy, NC	May 2, 2026
Food Truck Fridays: Andrews Chamber of Commerce	Andrews, NC	May-October: TBD	Annual Cherokee County Chamber of Commerce Golf Classic	TBD	May 6, 2026
Community Dances at John C. Campbell Folk School	Brasstown, NC	Varies, Tuesday And Saturdays	Georgia Mountain Fire & Smoke Cooking Festival	Hwassee, GA	May 16, 2026
Community Jam Night at The Crown at Brasstown	Brasstown, NC	Thursday Nights	Spring Arts in The Park (Blue Ridge Mountain Arts Association)	Blue Ridge, GA	TBD
Brasstown Valley Community Civic Center Bluegrass Concerts	Brasstown, NC	Summer	Cherokee County Annual Fundraiser Forks & Corks	Murphy, NC	June 4, 2026
July 4th Parade & Freedom Festival	Hayesville, NC	July 4th	Fireworks at Konehete Veterans Park	Murphy, NC	July 4, 2026
Goldadgen Glass Studio - Hot Summer Nights	Hayesville, NC	Summer	Fireworks at Andrews Rec Park	Andrews, NC	July 2026 TBD
Acoustic Sunsets at Hamilton Gardens Fall Series	Hwassee, GA	Thursdays September 5 - October 3	Hot Summer Nights Car Show	Andrews, NC	August 1, 2026
Storytime: Murphy Public Library	Murphy, NC	Mondays 10:30 am	73rd Annual Georgia Mountain Fair	Hwassee, GA	August 14-22, 2026
Rotary Club of Murphy	Murphy, NC	Mondays 12 pm at Mariolino's	CCCC Annual Member Dinner	Hwassee, GA	September 9, 2025
Mountain Vale Romcom Nights	Murphy, NC	Tuesdays	Cherokee County Fair	Andrews, NC	September 17th - 20th 2025
Singo At Buck Bald	Murphy, NC	Tuesdays	American Made Music Festival Oktoberfest	Hwassee, GA	September 24-26, 2026
Trivia Night At Chevelle's	Murphy, NC	Tuesdays	Cigar Box Guitar Music Festival and Shriners Car Show	Robbinsville, NC	September 2025
Karaoke Night At Chevelle's	Murphy, NC	Wednesdays	Bear On the Square Chainsaw Artists at The M.A.C.	Murphy, NC	September 2026
Theology On Tap	Murphy, NC	Thursdays at Cherokee Cellars	John C. Campbell Folk School Fall Festival	Brasstown, NC	October 4-5, 2025
Survey Slam At Buck Bald	Murphy, NC	Thursdays	Georgia Mountain Fall Festival	Hwassee, GA	October 10-18, 2025
Soul Table At Murphy First United Methodist Church	Murphy, NC	1st and 3rd Thursdays Monthly	Paint the Town Fall	Murphy, NC	October 11, 2025
Community Carving Night at Olive's Porch	Murphy, NC	Third Friday of The Month, 5-6 pm	Fall Arts in The Park (Blue Ridge Mountain Arts Association)	Blue Ridge, GA	October 12-13, 2025
Art Walk	Murphy, NC	First Friday May - December	Punkin' Chunkin' Festival	Brasstown, NC	October 18-19, 2025
Peachtree Community Grocery Bingo	Murphy, NC	3rd Friday Monthly	Limited Activities October 17, 2025	Andrews, NC	October 17, 2025
Murphy Farmer's Market	Murphy, NC	Saturday Mornings April - November	Trunk or Treat	Andrews, NC	October 31, 2025
Second Saturday Shop and Sip	Murphy, NC	2nd Saturday 2 pm - 5 pm	Halloween At The Fairgrounds	Hwassee, GA	October 31, 2025
Fairy Cross Bottle Sunday Flight Club	Murphy, NC	Sundays	A Murphy Haunting	Murphy, NC	October 31, 2025, 4:00 pm
Chevelle's Live Music	Murphy, NC	Friday, Saturday, Sunday	Forge After Dark-John C. Campbell Folk School	Brasstown, NC	November 7, 2025
Narrative Book Store Book Clubs	Murphy, NC	Regular Book Club: Monthly 2nd Thursday Romance Book Club: Monthly 3rd Friday	Christmas on Main	Andrews, NC	November 22, 2025
Mason Bar and Mimos Corner	Murphy, NC	Various Theme Nights (Taco Tuesday, etc. Throughout Year)	Free Thanksgiving Dinner (Served at Main Street USA Hosted by Rotary Club)	Murphy, NC	November 27, 2025
Live Music At Murphy's Chophouse	Murphy, NC	Weekly	Mountain Country Christmas in Lights	Hwassee, GA	November 27-December 23, 2025
Live Music At Cherokee Cellars	Murphy, NC	Weekly	Christmas Parade-Murphy	Murphy, NC	December 5, 2025
Peachtree Community Club Annual Craft Show	Peachtree, NC	November 8, 2025	Christmas Tree Lighting, Downtown Murphy	Murphy, NC	December 5, 2025
West Tubing Company Wine Nights	Warne, NC	Third Tuesday Monthly	Christmas Tree Lighting, Town of Murphy Christmas Parade	Murphy, NC	December 6, 2025
			Christmas Parade-Andrews	Andrews, NC	December 13, 2025
			Fire Sale at John C. Campbell Folk School	Brasstown, NC	December 15, 2025
			Winter Dance Week at John C. Campbell Folk School	Brasstown, NC	December 27, 2025-January 1, 2026
			New Year Fireworks	Hwassee, GA	December 31, 2025, 8:45 pm

**NANTAHALA OUTDOOR CENTER**  
500 ACRES OF ADVENTURE

noc.com

**Georgia Mountain Fairgrounds**

Hwassee, GA 706-896-4191  
GeorgiaMountainFairgrounds.com

**TASTING ROOM**  
1060 MAIN ST., ANDREWS, NC  
828-321-1600  
www.ferncrestwinery.com

**AgSouth Farm Credit**  
Loans for land, farms and homes  
AGSOUTHFC.COM • (828) 837-7436

**Support Our Troops**

LOOKING FOR SOMETHING TO DO? CHECK OUT OUR EVENT CALENDAR TO FIND SOMETHING FROM OUR MEMBERS FOR YOU!

**NAPA AUTO CARE**  
**GERARD'S AUTOMOTIVE SHOP**  
24 Months 24,000 Miles Powertrain Warranty  
828-516-5449  
1027 CONNAHETTA ST MURPHY NC 28906

**EXPLORE AMERICA**

**CHEROKEE COUNTY CHAMBER OF COMMERCE**

Printed on Recycled Paper

**SWEET TREATS & TRUSTED SHIPPING!**

CONTACT: chilstopp@gmail.com  
828-837-8390  
1162 Andrews Rd, Murphy, NC

**Keep America GREEN!**

**CIGAR BOX GUITAR MUSIC FESTIVAL**  
SEPTEMBER 2026  
ROBBINSVILLE, NC  
Questions? Call (828) 479-3250

**VALLEY RIVER DENTAL**  
Dr. Jared T. Houston, D.D.S., Dr. Tomi Minis, D.M.D., Dr. Courtney Marshall, D.M.D.  
98 Bill Hughes Avenue, Murphy, NC 28906  
valleyriverdental@gmail.com  
828.837.3577

**PROUD TO BE AN AMERICAN**

**FLEXIBILITY TO UNWIND IN NATURE**  
**AT THE INTERSECTION OF ART & OUTDOORS**  
TOWNS OF ANDREWS AND MURPHY, NC

Check out our Digital Guidebook for festivals and start planning your trip today!  
www.cherokeecountychamber.com

**CHEROKEE COUNTY CHAMBER OF COMMERCE**

We specialize in primary, secondary, and rental homes, because your happy place deserves to be protected.

**FARLEY INSURANCE**  
828-837-7447  
www.farleyagency.com  
1004 HWY 64 W | Murphy, NC  
Home • Auto • Life • Health • Business

**Cherokee County Community Connections**  
ENGAGING CHEROKEE COUNTY, ONE CONNECTION AT A TIME

**More than just Internet**  
Are you ready for life-changing high-speed internet? RiverStreet Networks has decades of experience providing internet access to communities — just like yours!  
CALL TODAY  
RiverStreet NETWORKS  
844.238.0151 | myriverstreet.net

**STECOAH**  
stecoah valley cultural arts center  
Cultural Arts Classes • Historic Rock Schoolhouse  
Artisan Gallery • Festivals  
Playground • Cherokee Courtyard  
Walking Trail • An Appalachian Evening Concert Series  
Open Mon - Sat 10 am - 4 pm  
121 Schoolhouse Road, Stecoah (Robbinsville), NC 28771  
828-479-3364 • stecoahvalleycenter.com

**DELICIOUS, LOCALLY BREWED CRAFT BEER**  
FILL A PINT - FILL A BROWLER - FILL YOUR MIND!  
Enjoy our spacious outdoor patio!  
104 TENNESSEE ST. MURPHY, N.C.  
706.431.7141 • To learn more, go to: www.buckblabrewing.com  
Visit us at our other location: 100 BOBEE ST. COPPERHILL, TN

**MOUNTAIN INSURANCE**  
A DIVISION OF MOORE INSURANCE SERVICES  
AUTO • COMMERCIAL • HOME • LIFE  
(828) 837-3866  
1241 Hwy 64 W Murphy, NC 28906  
www.Mountain-Insurance.com

With affordable and reliable electric and broadband services  
**Blue Ridge Mountain EMC**  
875 Main Street East | P.O. Box 9  
Young Harris, Georgia 30582  
(828) 837-1017 | (706) 379-3121  
brmemc.com

**Erlanger quality with a Carolina view.**  
erlanger Western Carolina Hospital  
828-837-8161 | erlanger.org/westerncarolina