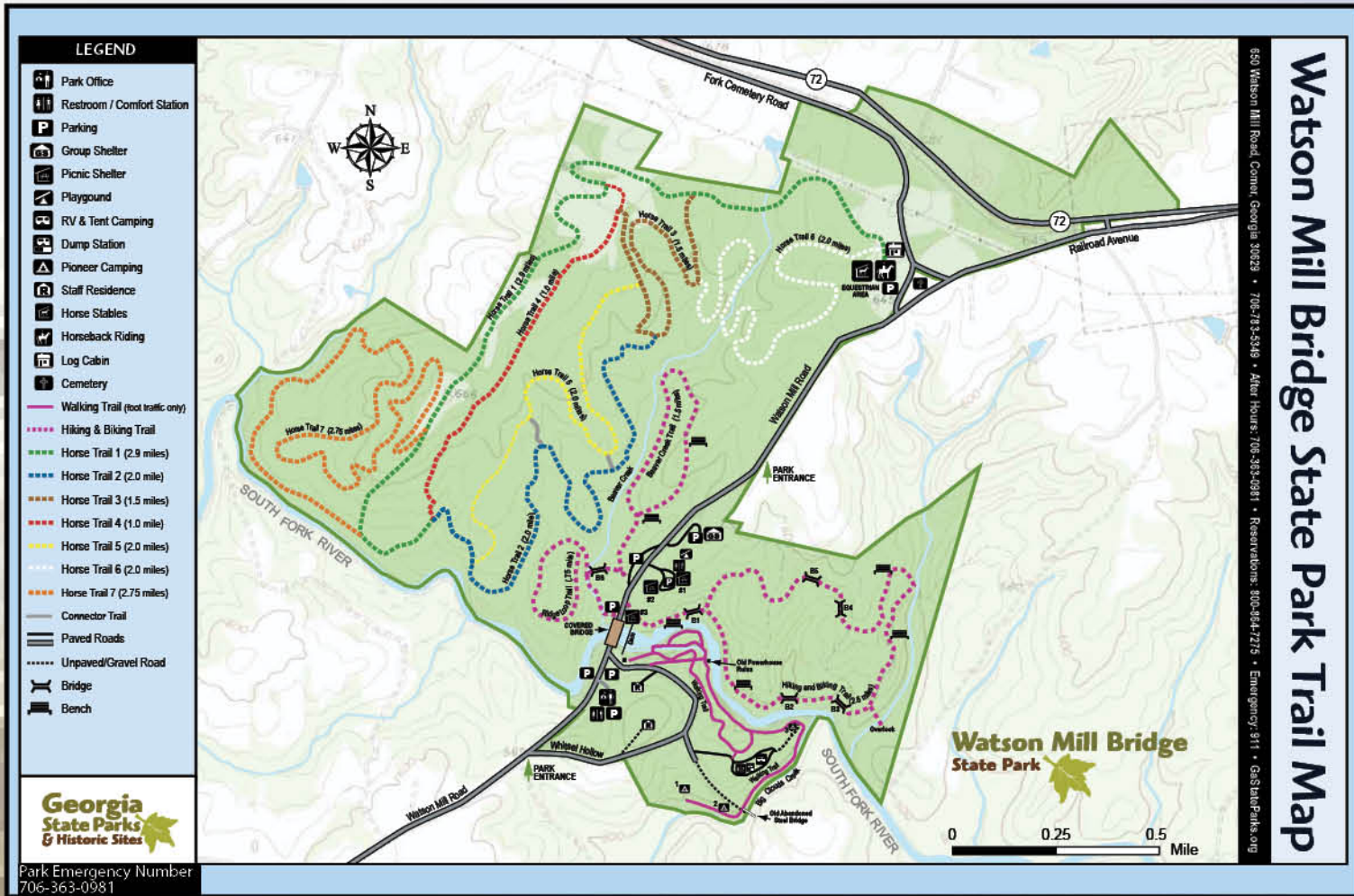


Watson Mill Bridge State Park

(706) 783-5349 Park Emergency
GaStateParks.org (706) 363-0981



WATSON MILL BRIDGE STATE PARK

Picturesque Watson Mill Bridge State Park features the longest remaining covered bridge in Georgia, spanning 229 feet across the South Fork River. Built in 1885, the bridge is supported by a wooden lattice truss system held firmly together with wooden pins. At one time, Georgia had more than 200 covered bridges; today, less than 20 remain. Covering more than 1,000 acres, the park is ideal for a picnic or camping. Nature trails, bike trails and equestrian trails allow visitors to enjoy the thick forest along the river. During summer, visitors often play in the cool river shoals.

The old Watson grist mill, from which the bridge got its name, operated during the late 1800s. The mill was run by Gabriel Watson and housed a furniture shop on the bottom floor. Evidence of the old mill is long since gone, but there is evidence of the old hydro-electric plant fed by the river. The present dam and raceway wall below the bridge were constructed around 1905 as part of this hydro-electric plant.

ACTIVITIES & FACILITIES

Camping - The park offers 21 combination tent, trailer and RV sites and 3 pioneer camping areas. A comfort station provides hot showers, flush toilets and laundry facilities. 11 campsites in the Equestrian Area.

Picnicking - There are 70 picnic sites and 3 picnic shelters. Shelters are reserable for a fee, and are available on a first-come, first-served basis at other times. An enclosed group shelter is available for rent and provides indoor seating for 90, a sink, oven, stove, BBQ pit and central heat and air conditioning.

Hiking and Biking - The park offers 7 miles of hiking trails and 5 miles of biking trails. Bikes are not allowed on hiking trails on the south side of the river or around the campground.

Horse Trails - More than 15 miles of trails are available for horseback riding. The equestrian area is 1.25 miles north of the covered bridge and includes a campground and rustic log cabin "bunkhouse". A central bathhouse is available for these campers and cabin guests.

Fishing - Park waters are open for legal fishing throughout the year. Persons age 16 or older must have a valid resident/non-resident fishing license.

Boating - Mill Pond is open to both private canoes and canoes rented from the park office.

Log Cabin - A rustic log cabin "bunkhouse" is also available located in the equestrian area.

TRAIL DESCRIPTIONS

Nature Trail

The 2 miles of nature trails run along the south side of the South Fork River and Big Clouds Creek. Portions of the trails wander through the historical portions of the park along the old powerhouse sluiceway, also known as a raceway. This man-made waterway channel is about 300 yards long and runs from the old dam just below the covered bridge to a second dam just above the foundation of the old powerhouse. The powerhouse generated electricity for a textile mill 10 miles away in Crawford, GA, for nearly half a century, beginning in 1905. The overlook at the head of this trail affords a view of the covered bridge and shoals below. At this site, the original Watson's Mill, gone by the end of the 1800s, once sat. The rest of the trails beyond the old powerhouse ruin meander through the woods along the banks of the river and creek and pass by the camping areas.

Biking & Hiking Trail

This six foot wide 2.5-mile loop trail runs along the north side of the South Fork River and is one of the most popular trails for hiking, mountain biking, and jogging. The trail meanders through hardwood and mixed forests and provides one of the best views of the lower shoals of the river. About half way around the loop is an overlook at the edge of what was once a natural beaver pond. Over the years, natural succession has taken place and the former pond area has now become a meadow. It most likely will eventually become part of the forest. Will it ever be a pond again? Only time, Mother Nature and the beavers will tell.

For the mountain biker, this trail is not overly technical as it is designed for beginners and intermediates. There are a few fairly steep grades. The entire trail is under shaded canopy. Whether you hike or bike, you will see a lot of biodiversity in the various types of environments the trail covers.

Beaver Creek Trail

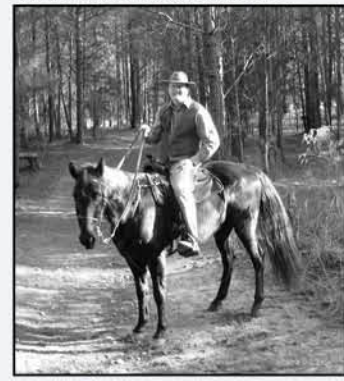
This six foot wide 1.5-mile loop trail runs up Beaver Creek and over a high ridge back through the hardwood forests on its return. The creek was once the site of several beaver ponds. The beavers left this creek area in the mid 1990s after a period of heavy downpours washed away the beaver dams. They now are most often seen in the river. As time goes on, the beavers may return. But even so, this area is an important wetland habitat. Birding opportunities abound on all trails, but especially on the trails on the north side of the river. This trail is for hiking, biking, and jogging. At the head of where the beaver ponds once began, there is a short rocky section and the entire trail is under shaded canopy.

Ridge Loop Trail

This six foot wide .75 mile trail begins in sight of the covered bridge where Beaver Creek dumps into the South Fork River. If you look carefully, to the right of the trail as it begins to climb up the ridge, old wheel ruts from "buggy days" can be seen when a horse and wagon was the mode of transportation. Ferns can now be seen growing in the old ruts. While heavily wooded with big trees providing a shaded canopy, the top of the ridge was once planted in cotton in the late 1800s. Much of the park was once in agricultural use whether planted in cotton or fenced for livestock. While this loop is just under a mile, it is also part of the overall trail system that accommodates hikers, mountain bikers, and joggers.

Horse Trails

Equestrians can explore 15 miles of horse trails where bicycles and dogs are not allowed. These go through a variety of environments. While almost unnoticeable, there are remains of old home sites from the 1800s. An agriculture society once occupied this area and, as the years have gone by, nature is taking back what had been altered by man. The state park was established in 1970. However, until the state park acquired additional land in the mid 1990s, private companies were managing portions of the properties for timber production. The overall state park management plan is to help provide sound resource preservation and conservation. However, due to the various uses of the land before it was acquired by the state park, there are numerous environments from "natural" forested areas to formerly "timber" managed areas. Along the creeks, large hardwoods with high canopies will be seen. Some of the formerly "timber" managed areas are now predominately pine forests and a few "old" abandoned field areas. While the park is full of wildlife, the deer population is truly wild and at the first sign of a person hiking a trail a deer will usually scatter. If you are riding horseback, the deer will generally stand in place for riders to get close-up views. (The deer seem to see the trail rider as just another critter rather than a human). Because of the soil types in this area of the country, there are no "through the stream" trail crossings as streams are all crossed by way of culvert bridges. While there are some grades, most trail riders consider Watson Mill Bridge trails' terrain is not as steep as mountain trails further north nor as flat as the trails further south. This is one of the reasons equestrian trails are so popular at this site. There is something for everyone. At the head of the horse trail system, there is a camping area for equestrians wishing to stay longer than just a day.



Park Information

Park Hours..... 7:00 a.m. – 10:00 p.m.
Office Hours..... 8:00 a.m. – 5:00 p.m.
Address..... 650 Watson Mill Road, Corner, GA 30629
Location..... Twenty miles northeast of Athens
Counties..... Madison and Oglethorpe
Park Telephone..... 706-783-5349
Reservations..... GaStateParks.org or 1-800-864-7275
Website..... GaStateParks.org

Facebook.com/GaStateParks
Instagram.com/GaStateParks
Tag us #GaStateParks
#WatsonMillBridgeStatePark

ParkPass — A parking fee is required and is valid for all parks visited that day. Proceeds go toward park maintenance. Frequent visitors can save money by purchasing an Annual ParkPass or membership in Friends of Georgia State Parks.

In Case of Emergency

Park staff residences are indicated on the map.
Emergency 911
Park After-Hours Emergency (706) 363-0981
The nearest hospital services are located in Athens. Piedmont Athens Regional is located at 1199 Prince Avenue, Landmark Hospital is located at 775 Sunset Drive, and St. Mary's Hospital is located at 1230 Baxter Street.



This map not to scale.
This map for location reference only.

Madison & Oglethorpe Counties

Printed On Recycled Paper
Southeast Publications
All Rights Reserved © 2025

Operated by the Georgia Department of Natural Resources
2610 Hwy 155 SW
Stockbridge, GA 30281
(770) 389-7286, GaStateParks.org

LA CABAÑA DE DON JUAN 1

MEXICAN RESTAURANT

MON TO SAT
11:00 AM - 10:00 PM
SUNDAY
11:30 AM - 9:00 PM

706-743-6174
777 Athens road
Lexington, GA 30648

Help Keep America BEAUTIFUL!

RVING USA
Mobile App

Find Places & Services Every RVer Needs

Download on the App Store
GET IT ON Google Play

COMER VETERINARY HOSPITAL

Located 10 minutes from Watson Mill Bridge State Park!

4 Your Hometown-Away-From-Home Veterinary Team

311 GA-72 in Comer
706 783 5111

Open Monday through Friday 8 to 5:30 and Saturdays 8 to noon. Daytime emergency services available. Veterinary care for small animals, exotics, and hobby farm pets.

www.ComerVetHospital.com
comer_vet /ComerVetHospital

Create memories...

... **GO CAMPING**

EARN WHILE YOU EXPLORE WITH US

2-Week Free RV Stays
GO WHERE YOU WANT
Commission and Additional Passive Income Opportunities

JOIN NOW

For Info:
Erin@SEPUB.com
1-800-832-3292

All Rights Reserved ©
* Maps Not To Scale

GEORGIA
DEPARTMENT OF NATURAL RESOURCES
STATE PARKS & HISTORIC SITES
Watson Mill State Park

Comer

Lexington

Watson Mill Rd.

This Guest Guide was produced at no cost to the State of Georgia. It is paid for by the advertisers. The brochure is distributed as a courtesy and should not be considered an endorsement by the State of Georgia of the goods and/or services offered.

Southwest Publications • Jeremy / Barber • 1/26

Printed in the USA

BlueSky
Tire & Auto Service

3 Don't let your camping experience go **FLAT!**

Help is right around the corner at BlueSky!

Trailer Tires
13" - 16"
Full-service provider for trucks, cars, and SUVs.

840 Athens Rd., Crawford GA
706-706-2241
BlueSkyTireAndAuto.com

The RV Bunch
Join us TODAY!
thervBunch.com

Find us on: facebook.

2

La Cabaña
MEXICAN RESTAURANT

2 Locations
158 Gholston St. Comer Ga. 30629 (706) 783-0012
6876 Ga - 72 Colbert Ga. 30628 (706) 909-0005

La Cabana Mexican Restaurant
lacabanamexicanrestaurants.com

RVING USA

REVIEW
★★★★★
The Parks You Visit on

RVINGUSA.COM