



Buffalo Bill State Park



4192 Northfork Hwy • Cody, WY 82414 • Park County
(307) 587-9227

Campsite Reservations:
<https://Reserve.Wyoming.gov>
(877) 996-7275



Current Weather Data/Web Cam View
<http://wxdata.dayweather.com/cams/bbr/buffalobillres.htm>

Buffalo Bill State Park Current Views
<https://wyoparks.wyo.gov/index.php/learn/web-cams>

Lake Shore Campground

US 14/16/20

To Yellowstone ← → To Cody

Fee Booth
Dump Station

T = Tent Camping
 Camp Host
 *Handicap Site are ADA approved Campsites
 *All Bathrooms are Unisex

Electric & Water
Electric Only

Tent Sites Only

BUFFALO BILL RESERVOIR

Stagecoach Campground

BUFFALO BILL RESERVOIR

Boat Ramp
Cabin
*All Restrooms are Unisex

Watch out for Rattlesnakes

Mountain Lure Cowboy Deer Hawk Barn Feather

Pay Station

114 115 116 117 118 119 120 121 122 123 124 125 126 127 128 129 130 131 132 133 134 135 136 137 138 139 140 141 142 143 144 145 146 147 148 149 150 151 152 153 154 155 156 157 158 159 160 161 162 163 164 165 166 167 168 169 170 171 172 173 174 175 176 177 178 179 180 181 182 183 184 185 186 187 188 189 190 191 192 193 194 195 196 197 198 199 200 201 202 203 204 205 206 207 208 209 210 211 212 213 214 215 216 217 218 219 220 221 222 223 224 225 226 227 228 229 230 231 232 233 234 235 236 237 238 239 240 241 242 243 244 245 246 247 248 249 250 251 252 253 254 255 256 257 258 259 260 261 262 263 264 265 266 267 268 269 270 271 272 273 274 275 276 277 278 279 280 281 282 283 284 285 286 287 288 289 290 291 292 293 294 295 296 297 298 299 300 301 302 303 304 305 306 307 308 309 310 311 312 313 314 315 316 317 318 319 320 321 322 323 324 325 326 327 328 329 330 331 332 333 334 335 336 337 338 339 340 341 342 343 344 345 346 347 348 349 350 351 352 353 354 355 356 357 358 359 360 361 362 363 364 365 366 367 368 369 370 371 372 373 374 375 376 377 378 379 380 381 382 383 384 385 386 387 388 389 390 391 392 393 394 395 396 397 398 399 400 401 402 403 404 405 406 407 408 409 410 411 412 413 414 415 416 417 418 419 420 421 422 423 424 425 426 427 428 429 430 431 432 433 434 435 436 437 438 439 440 441 442 443 444 445 446 447 448 449 450 451 452 453 454 455 456 457 458 459 460 461 462 463 464 465 466 467 468 469 470 471 472 473 474 475 476 477 478 479 480 481 482 483 484 485 486 487 488 489 490 491 492 493 494 495 496 497 498 499 500 501 502 503 504 505 506 507 508 509 510 511 512 513 514 515 516 517 518 519 520 521 522 523 524 525 526 527 528 529 530 531 532 533 534 535 536 537 538 539 540 541 542 543 544 545 546 547 548 549 550 551 552 553 554 555 556 557 558 559 560 561 562 563 564 565 566 567 568 569 570 571 572 573 574 575 576 577 578 579 580 581 582 583 584 585 586 587 588 589 590 591 592 593 594 595 596 597 598 599 600 601 602 603 604 605 606 607 608 609 610 611 612 613 614 615 616 617 618 619 620 621 622 623 624 625 626 627 628 629 630 631 632 633 634 635 636 637 638 639 640 641 642 643 644 645 646 647 648 649 650 651 652 653 654 655 656 657 658 659 660 661 662 663 664 665 666 667 668 669 670 671 672 673 674 675 676 677 678 679 680 681 682 683 684 685 686 687 688 689 690 691 692 693 694 695 696 697 698 699 700 701 702 703 704 705 706 707 708 709 710 711 712 713 714 715 716 717 718 719 720 721 722 723 724 725 726 727 728 729 730 731 732 733 734 735 736 737 738 739 740 741 742 743 744 745 746 747 748 749 750 751 752 753 754 755 756 757 758 759 760 761 762 763 764 765 766 767 768 769 770 771 772 773 774 775 776 777 778 779 780 781 782 783 784 785 786 787 788 789 790 791 792 793 794 795 796 797 798 799 800 801 802 803 804 805 806 807 808 809 810 811 812 813 814 815 816 817 818 819 820 821 822 823 824 825 826 827 828 829 830 831 832 833 834 835 836 837 838 839 840 841 842 843 844 845 846 847 848 849 850 851 852 853 854 855 856 857 858 859 860 861 862 863 864 865 866 867 868 869 870 871 872 873 874 875 876 877 878 879 880 881 882 883 884 885 886 887 888 889 890 891 892 893 894 895 896 897 898 899 900 901 902 903 904 905 906 907 908 909 910 911 912 913 914 915 916 917 918 919 920 921 922 923 924 925 926 927 928 929 930 931 932 933 934 935 936 937 938 939 940 941 942 943 944 945 946 947 948 949 950 951 952 953 954 955 956 957 958 959 960 961 962 963 964 965 966 967 968 969 970 971 972 973 974 975 976 977 978 979 980 981 982 983 984 985 986 987 988 989 990 991 992 993 994 995 996 997 998 999 1000

All Rights Reserved ©
• Maps Not To Scale

WILD WEST SPECTACULAR

THE MUSICAL CODY, WYOMING

2025 SUMMER SEASON
SELECT DAYS JUNE-AUGUST

LIVE AT THE HISTORIC DOWNTOWN CODY THEATRE

Clem's is our lobby eatery, open 7 days a week and offers food before and during performances so people can make us a "Dinner and a Show".

AT THE HISTORIC CODY THEATRE
CLEM'S
CANTEEN & CREAMERY

TripAdvisor Travelers' Choice Awards 2024

1171 SHERIDAN AVE.

WWW.CODYWILDWESTSHOW.COM

Custer Battlefield Trading Post & Cafe

Crow Agency, Montana
Little Bighorn Battlefield exit 510

Indian Art & Beadwork
Giftshop & Cafe
Indian Fry Bread
Buffalo Burgers
Indian Tacos
Steak!

NO SALES TAX OPEN YEAR ROUND
www.laststand.com

Keep America GREEN!

PROUD TO BE AN AMERICAN

CODY TROLLEY TOURS

MULTIPLE DAILY TOURS
FUN GUIDES
1 HOUR, 22 MILES

Our one hour Best of the West Trolley Tour will take you on a 22 mile adventure in and around Cody, Wyoming. The uniquely western history of Cody comes to life during your one hour tour.

FOR SAME DAY BOOKING
CALL OR TEXT
307-527-7043

BOOK ONLINE AT CODYTROLLEYTOURS.COM

ACE Hardware

BECK LAKE PLAZA
2201 17th Street

Mon. - Fri. 8am - 6pm
Sat. 8am - 5pm • Sun. 9am - 4pm

FULL LINE
Hardware Store • Plumbing • Electrical
Expanded Selection of RV Supplies • Propane Exchange

307-587-8555

The RV Bunch

Join us TODAY!

thervBunch.com

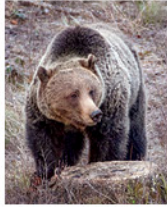
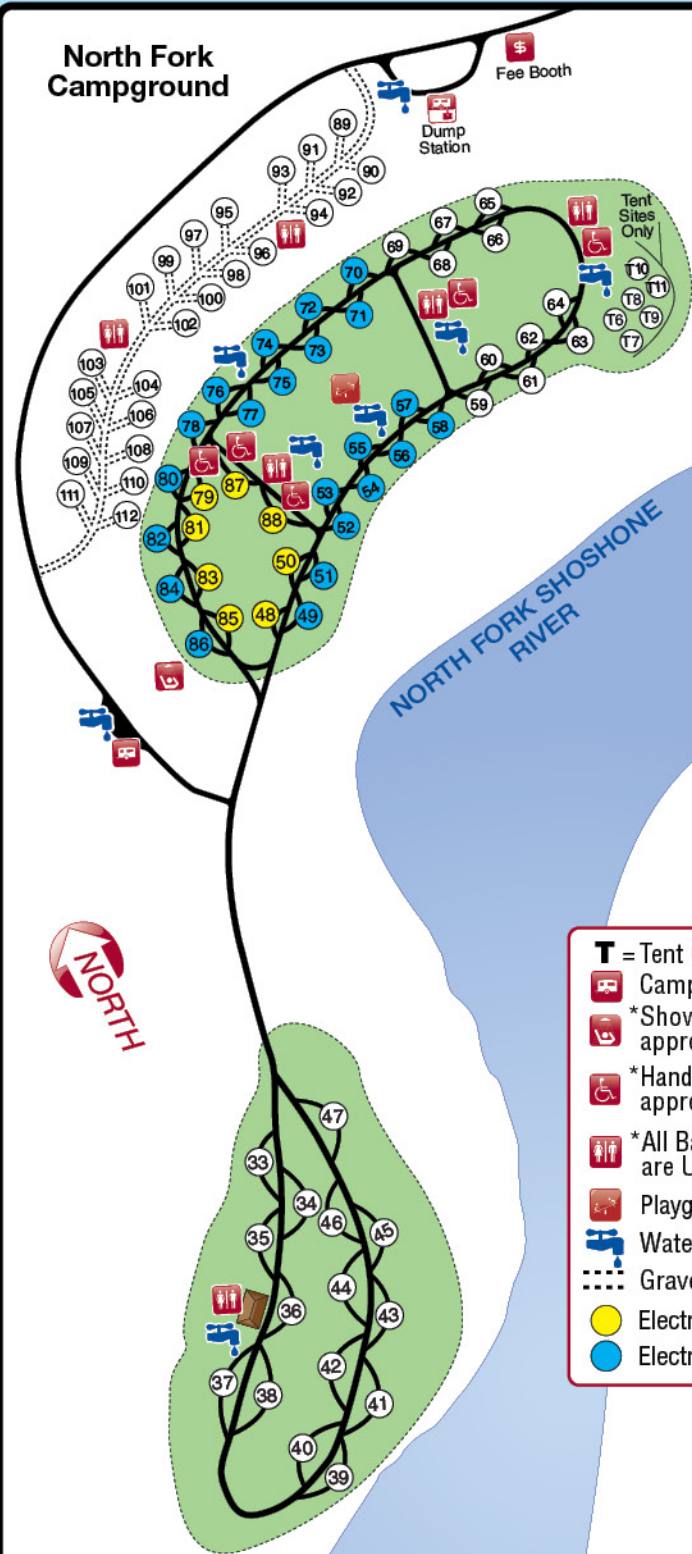
RVING USA

Mobile App

Find Places & Services
Every RVer Needs

App Store
Google Play

North Fork Campground



BeBearAware.org

Legend			
	Accessible		Dam
	ADA Approved Campsites		Drinking Water
	Ballfield (Basketball/Volleyball/Horseshoe/Fris)		Picnic Area
	Boat Ramp		Playground
	Cabin		Restrooms
	Camping		Group Picnic Shelter
			Interpretive Trail
			Information
			Park Headquarters
			Trailer Sanitary Station
			Viewing Area
			Gravel Road
			Reservoir Property Boundary
			Paved Road
			Showers (\$)
			Trail

3725 North Fork Highway

North Fork
All Sites Are Reservation Only

Gibbs Bridge

Shreve Lodge
By Reservation Only

Eagle Point

4192 North Fork Hwy.
Lake Shore
All Sites are Reservation Only

Marquette

Buffalo Bill Dam & Visitor Center

Sheep Mountain

Stagecoach

ARTS. PARKS. HISTORY.

Wyoming State Parks & Cultural Resources



Bartlett Lane

FACILITIES OPEN
MAY TO OCTOBER
LIMITED WINTER ACCESS

"Please put up your awning if you are leaving your campsite, and tie down your tent if you are gone for an extended period of time due to windy conditions at times."





Mountain Valley Motorsports

1850 Sportfish 10



CRESTLINER
The Leader By Innovation™

307-587-6218  **MERCURY**

ATVs • SNOWMOBILES • BOATS • MOTORCYCLES
422 W. Yellowstone Ave. • Across From Rodeo Grounds • Cody, WY
www.mountainvalleymotorsports.com

EARN WHILE YOU EXPLORE WITH US



SE **Publications**

- 2-Week Free RV Stays
- High Commission
- Go Where You Want
- Additional Passive Income Opportunities

Join Today!

1-800-832-3292 Erin@SEPub.com

Create memories...



... GO CAMPING

DINNER SHOW
THE CODY CATTLE COMPANY

FREE SHUTTLE

THE BEST DINNER & SHOW IN CODY

WWW.THECODYCATTLECOMPANY.COM
1910 DEMARIS DR., CODY, WYOMING 82414 | (307) 272-5770



ARROWHEAD RV Inc.

WINNEBAGO. Mobile Service The Big Horn Basin's Only Full Service Dealer

Awarded Top 20 In Nation For Customer Satisfaction

PARTS • SALES • SERVICE

754-GoRV (4678)
438 Alan Rd., Powell, WY 82435
Only 22 minutes to Powell



4

Buffalo Bill Dam & Visitor Center

FREE ADMISSION
Open Daily:
May through September
307-527-6076
www.BBDVC.com



RIMROCK TIRE COMPANY

Brakes • Alignments • Tires • Shocks • A/C Service & Repair
Struts • Batteries • Lube & Oil Changes

MOBILE TIRE SERVICE
Summer Hours: Mon-Fri 7-6 • Sat 8-1

2603 Big Horn Ave. **5a**
307-587-6875

GOOD YEAR BF Goodrich • Kelly Toyo & others

Powell Location **5b**
307-754-4885
601 E. Coulter



EXPLORE AMERICA



REVIEW
RVING USA ★★★★★
The Parks You Visit on



RVINGUSA.COM

LIFETIME ANIMAL HOSPITAL
Becky Prior, DVM

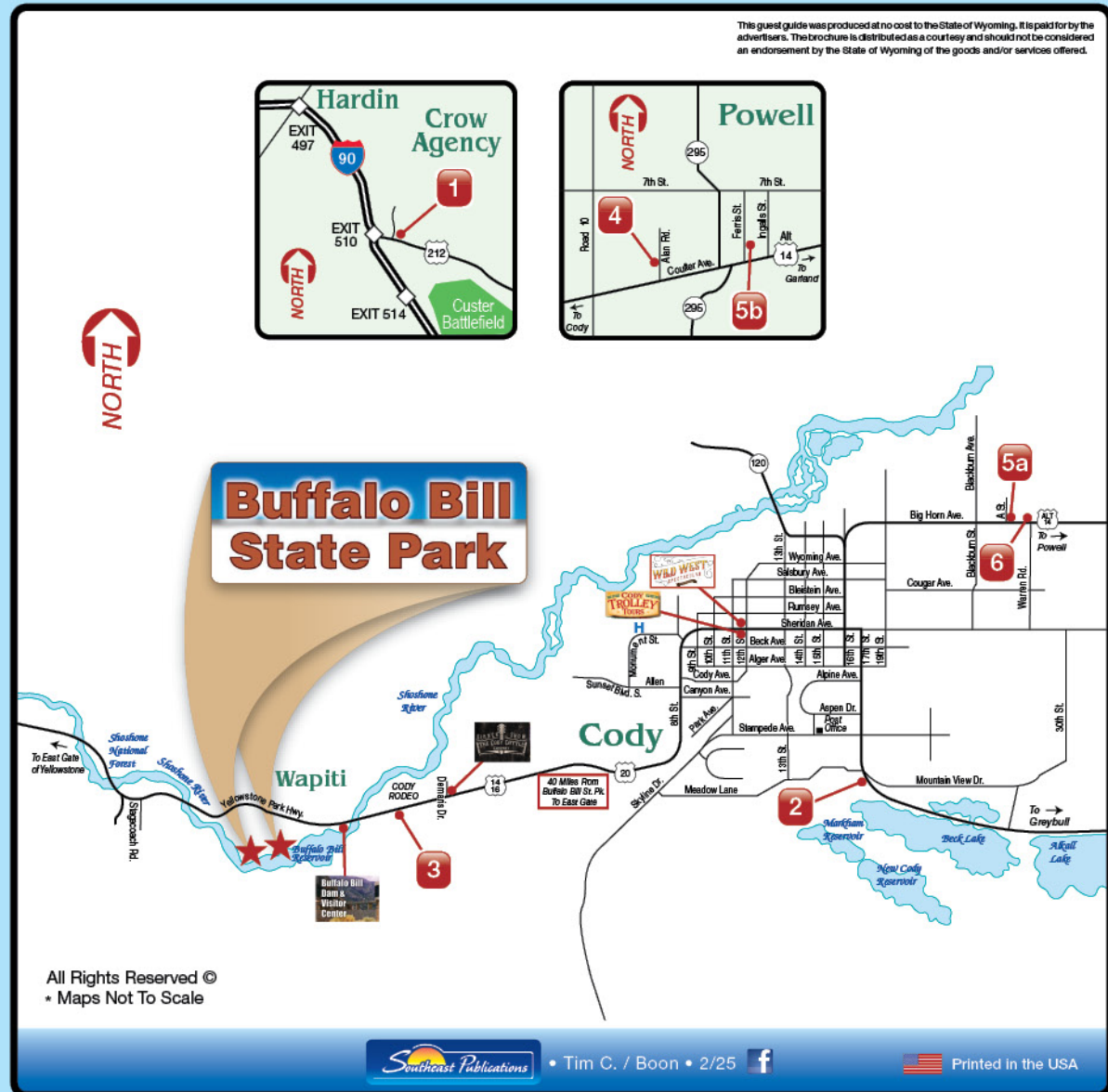
2627 Big Horn Ave.
Powell Highway
Cody, WY 82414
www.LTSAHosp.com

Hours: Mon-Fri - 8:00am - 5:00pm
Ph: 307-587-4324 (24 hours)
Fax: 307-587-5065
Email: Office@LTSAHosp.com

6

"Helping your pet be its best - for a Lifetime"
- 24 Hour Emergency Service -
Medicine • Surgery • Dentistry • Boarding

This guest guide was produced at no cost to the State of Wyoming. It is paid for by the advertiser. The brochure is distributed as a courtesy and should not be considered an endorsement by the State of Wyoming of the goods and/or services offered.



Buffalo Bill State Park

Cody

Wapiti



Hardin Crow Agency

Powell

5a, **5b**, **6**, **3**, **2**, **4**

307-587-4324

All Rights Reserved ©
• Maps Not To Scale

SE Publications • Tim C. / Boon • 2/25   Printed in the USA

Important Park Rules

- **Camping in a site reserved for another is prohibited.**
- Motorized vehicles shall be operated only on roads or areas designated for such use. A valid operator's license is required.
- Leaving any vehicle or other personal property unattended for longer than 24 hours is prohibited.
- Camping is permitted for a maximum of 14 days during any 30-day period.
- Quiet shall be maintained in all areas used for camping between the hours of 10 PM and 6 AM. **No generator use after 10 PM.**
- Areas designated as "day use only" must be vacated by 10 PM.
- Pets must be kept on a leash. Please pick up after your pet.
- All trash shall be deposited in containers designated for that purpose. In areas without containers, you are required to pack out your own trash.
- Discharge of firearms within 400 yards of designated areas is prohibited. Possession and discharge of fireworks is prohibited.
- Fishing and boating are permitted subject to regulations prescribed by the Wyoming Game and Fish Commission. Fishing from within 20 yards of any boat ramp and/or dock is prohibited.
- Glass containers are prohibited in designated areas.
- We have Pay Showers; \$1.00 for 3 minutes.

Fishing

Buffalo Bill Reservoir (excluding South Fork and Diamond Creek Dike Ponds in Park County): The portion lying west of a straight line connecting the mouths of Rattlesnake Creek and Sheep Creek (commonly known as Spring Creek) up the drainage to Gibbs Bridge is closed to fishing from April 1 through July 14. The creel limit on trout (excluding lake trout) shall be three (3) per day or in possession. No more than two (2) shall be cutthroat trout; and no more than one (1) trout (excluding lake trout) shall exceed eighteen (18) inches. The creel limit on lake trout shall be six (6) per day or in possession. No more than one (1) lake trout shall exceed twenty four (24) inches. The creel limit on walleye shall be unlimited.

North Fork of the Shoshone River Drainage from Newton Creek downstream to Gibbs Bridge (including Newton Creek) in Park County. Closed to fishing from April 1 through June 30.

North Fork of the Shoshone River Drainage upstream of Gibbs Bridge in Park County. The creel limit on trout shall be three (3) per day or in possession. No more than two (2) shall be cutthroat trout; and no more than one (1) trout shall exceed eighteen (18) inches.

Important Phone Numbers

Park HQ/Supt. Office
.....307-587-9227

Park Law Enforcement
..... 1-800-442-2767

Lake Shore Entrance Station
.....307-527-6274

North Fork Campground Entrance
Station307-527-6057

Buffalo Bill Dam Visitor Center
.....307-527-6076

Chamber of Commerce
(Cody Area Info)....307-587-2297

Emergency911

County Sheriff307-527-8700

Game & Fish Dept. Cody District
.....307-527-7125

Forest Service Wapiti District
..... 307-527-6921

Yellowstone National Park
..... 307-344-7381

Bureau of Land Management
.....307-578-5900