



Buffalo Bill State Park



4192 Northfork Hwy • Cody, WY 82414 • Park County
(307) 587-9227



Campsite Reservations:
<https://Reserve.Wyoming.gov>
(877) 996-7275



Current Weather Data/Web Cam View
<http://wxdata.dayweather.com/cams/bbr/bbrwebpic.htm>

Buffalo Bill State Park Current Views
<https://wyoparks.wyo.gov/index.php/learn/web-cams>

Custer Battlefield Trading Post & Cafe
 Crow Agency, Montana
 Little Bighorn Battlefield exit 510

Indian Art & Beadwork
 Giftshop & Cafe
 Indian Fry Bread
 Buffalo Burgers
 Indian Tacos
 Steak!

OPEN YEAR ROUND
 NO SALES TAX
www.laststand.com

MOUNTAIN VALLEY MOTORSPORTS
307-587-6218
 422 W Yellowstone Avenue, Cody, WY
 Across from Rodeo Grounds
www.mountainvalleymotorsports.com

MERCURY We Service Boats
Sales • Service • Parts

- Harley Davidson
- CFMOTO
- Yamaha
- Suzuki
- Arctic Cat
- E-Bike Rentals
- SxS Rentals

DINNER SHOW
THE CODY CATTLE COMPANY
 CODY WY

The Best Deal In Cody!
DINNER & SHOW

Get Your Trifecta Tickets!
DINNER, SHOW, & THE RODEO

www.thecodycattlecompany.com
(307)272-5770
1910 DEMARIS DR. CODY, WY 82414

FREE SHUTTLE!

Scan me for tickets

RIVING USA Mobile App

Find Places & Services
 Every RVer Needs

GET IT ON Google Play
 Download on the App Store

BUFFALO BILL'S WILD WEST SPECTACULAR
 2026 SUMMER SEASON
 SELECT DAYS JUNE-AUGUST

LIVE PERFORMANCES ON STAGE
 AT THE HISTORIC CODY THEATRE

CLEM'S
 CANTINE & CREAMERY

Clem's is our lobby eatery, open to the public all day, every show day.

1171 SHERIDAN AVE.
WWW.CODYWILDWESTSHOW.COM

Buffalo Bill Dam & Visitor Center

FREE ADMISSION
 Open Daily:
 May through September
307-527-6076
www.BBDVC.com

Join us TODAY!

The RV Bunch

thervbunch.com

• Breakfast All Day!
 • Homemade Cinnamon Rolls
 • 25¢ Coffee
 • FREE WIFI

OUR PLACE CAFE

Est. 2023

148 W. Yellowstone Ave
 307-213-5255
yourplace.wy@gmail.com

fourplacecafecody.wy

THE COWBOY PALACE

Western Wear For The Entire Family

307-578-8725
 1251 Sheridan Ave
 Cody, WY 82414



LIFETIME ANIMAL HOSPITAL

For ALL Small Animals

WEEKDAY APPTS & URGENT CARE

Since 1970

Call us at 307-587-4324
 24 Hours a Day

24 Hour Emergency Services
 2627 Big Horn Ave, Powell Hwy, Cody, WY

Check us out Online at www.LTSAHosp.com

Dr. Becky Prior & Dr. Britt Whitt

Office Hours
 Mon-Fri 8:00am—5:00pm
 *Sat 8:00am—9:00am
 *Sun 5:00pm—6:00pm
 *Boarding Drop Off & Pick Up Only

PAT'S BREW HOUSE
 CODY WYO

WYOMING'S FIRST ALL-WOMEN OWNED AND OPERATED BREWERY.
 SERVING UP TASTY PUB FARE AND CRAFT BREWS WEDNESDAY-SUNDAY.

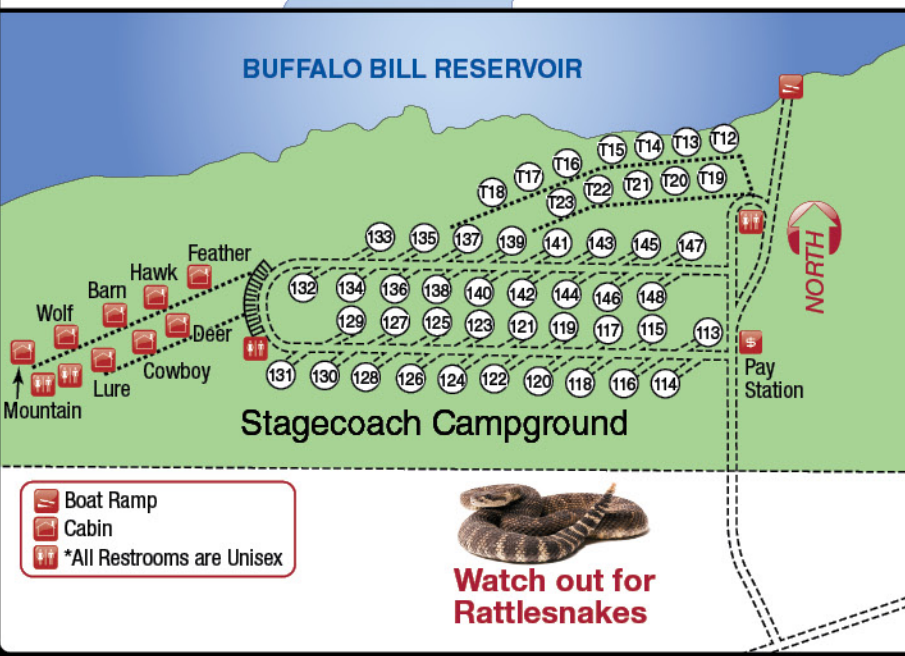
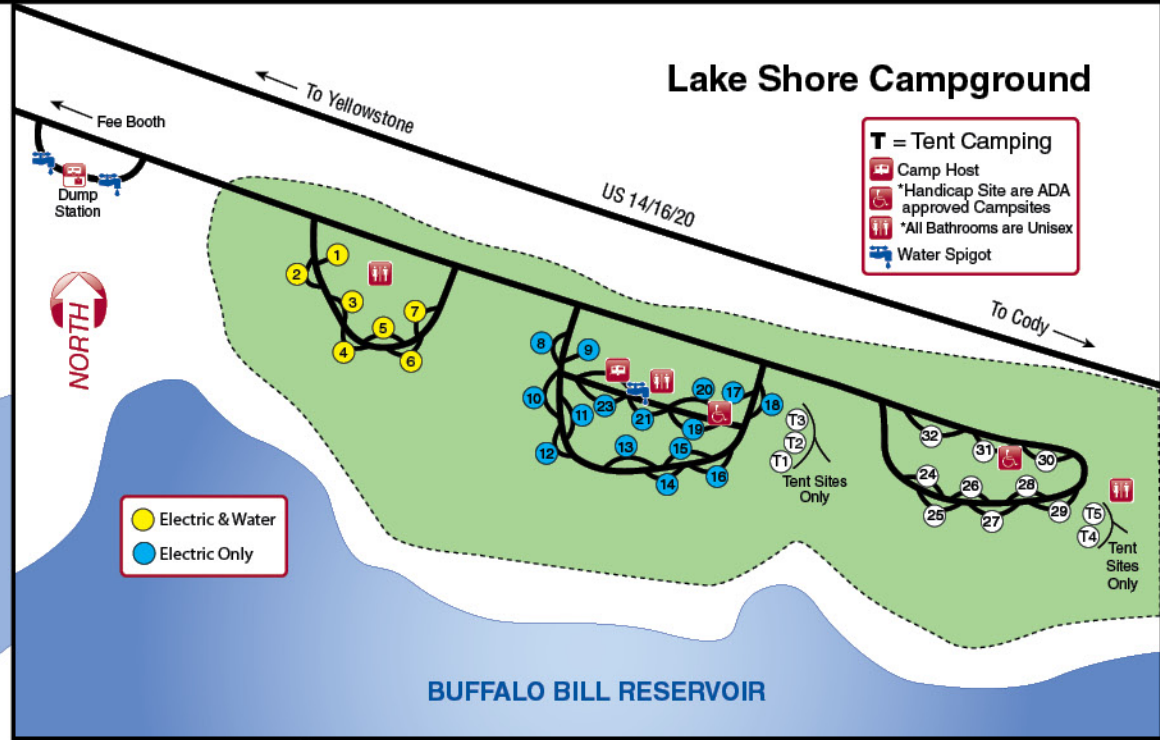
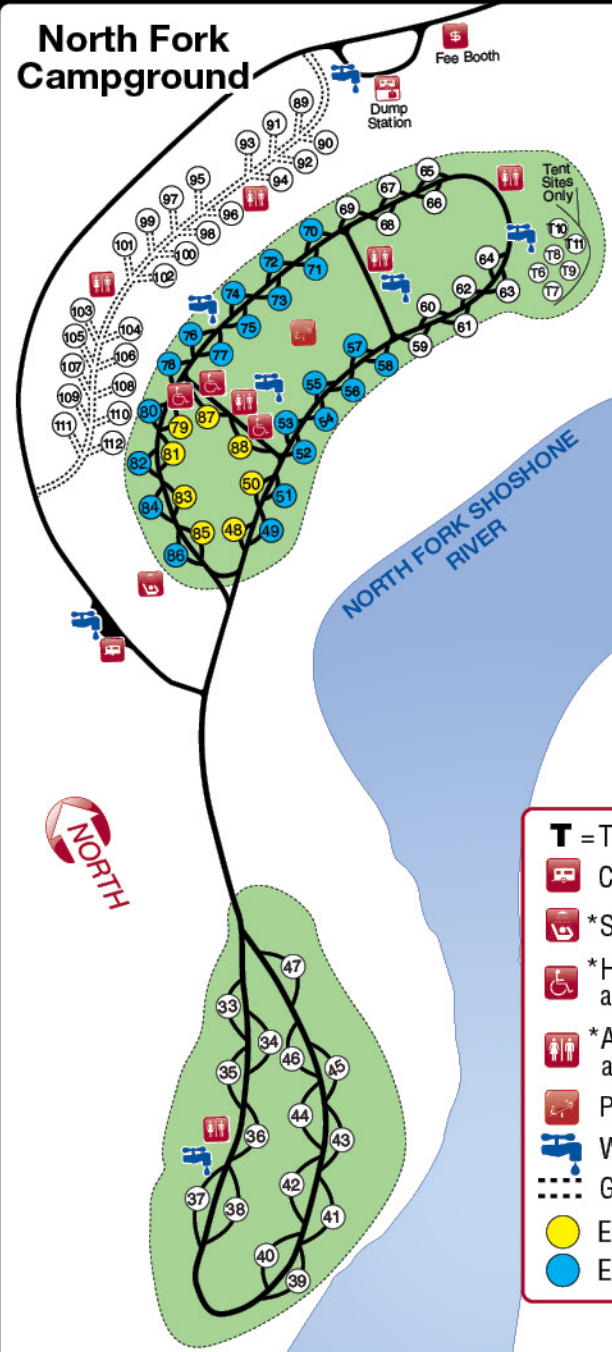
1019 15TH ST
 CODY, WYOMING
 (307) 586-5410
PATSBREWHOUSEWY.COM

CHINA TOWN
 CHINESE BUFFET
 OPEN 7 DAYS A WEEK

(307) 586-9798
 MENTION THIS PARK'S GUIDE FOR 10% OFF
 937 Sheridan Ave. Cody WY 82414

RIVING USA

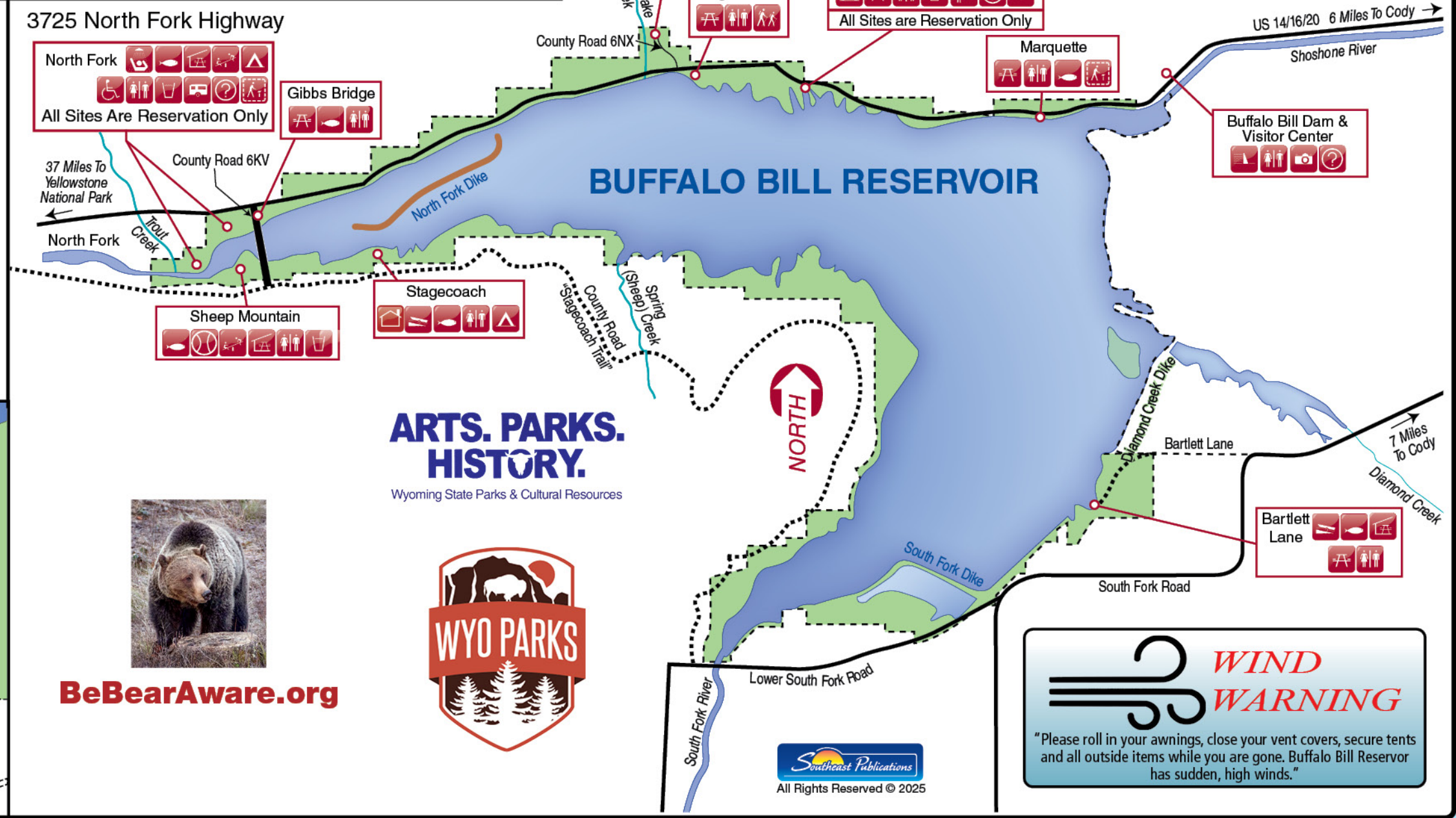
REVIEW
 The Parks You Visit on RVINGUSA.COM



Legend

	ADA Approved Campsites		Drinking Water		Picnic Area		Viewing Area
	Ballfield (Basketball/Volleyball) Horseshoe Pits		Fishing		Playground		Gravel Road
	Boat Ramp		Group Picnic Shelter		Restrooms		Reservoir Property Boundary
	Cabin		Interpretive Trail		Showers (\$)		Paved Road
	Camping		Information		Trailer Sanitary Station		
	Dam		Park Headquarters				

FACILITIES OPEN
MAY THRU SEPTEMBER
LIMITED WINTER ACCESS





REDEEMING GRACE CHURCH

9:00 AM Sunday School | 10:30 AM Worship Service

Pastor Kyle Wassell

307-212-8259

www.rgccody.com • facebook.com/rgccody.com



Worship with us this Sunday @ 1608 19th St. • Cody, WY



BECK LAKE PLAZA 2201 17th Street

Mon. - Fri. 8am - 6pm

Sat. 8am - 5pm • Sun. 9am - 4pm

FULL LINE

Hardware Store • Plumbing • Electrical
Expanded Selection of RV Supplies • Propane Exchange



307-587-8555



**MULTIPLE DAILY TOURS
FUN GUIDES
1 HOUR, 22 MILES**

Our one hour Best of the West Trolley Tour will take you on a 22 mile adventure in and around Cody, Wyoming. The uniquely western history of Cody comes to life during your one hour tour.

FOR SAME DAY BOOKING
CALL OR TEXT
307-527-7043

BOOK ONLINE AT CODYTROLLEYTOURS.COM



Buffalo Bill State Park

Cody

Wapiti

40 Miles From Buffalo Bill St. Pl. To East Gate

Shoshone National Forest

Shoshone River

Buffalo Bill Reservoir

Markham Reservoir

Beck Lake

New Cody Reservoir

Alkali Lake

REDEEMING GRACE CHURCH

CODY ACE HARDWARE

OUR PLACE CAFE

CODY RODEO

WILD WEST

CODY TROLLEY TOURS

LIFETIME ANIMAL HOSPITAL

40 Miles From Buffalo Bill St. Pl. To East Gate

All Rights Reserved ©
• Maps Not To Scale

Southwest Publications • Tim C. / Taylor • 1/26

Printed in the USA

Earn While You EXPLORE WITH US

We Offer:

- 2-Week Free RV Stays
- Go Where You Want
- Commission and Additional Passive Income Opportunities

JOIN TODAY!

CONTACT:
ERIN@SE PUB.COM
1-800-832-3292



Important Park Rules

- **Camping in a site reserved for another is prohibited.**
- Motorized vehicles shall be operated only on roads or areas designated for such use. A valid operator's license is required.
- Leaving any vehicle or other personal property unattended for longer than 24 hours is prohibited.
- Camping is permitted for a maximum of 14 days during any 30-day period.
- Quiet shall be maintained in all areas used for camping between the hours of 10 PM and 6 AM. **No generator use after 10 PM.**
- Areas designated as "day use only" must be vacated by 10 PM.
- Pets must be kept on a leash. **Please** pick up after your pet.
- All trash shall be deposited in containers designated for that purpose. In areas without containers, you are required to pack out your own trash.
- Discharge of firearms within 400 yards of designated areas is prohibited. Possession and discharge of fireworks is prohibited.
- Fishing and boating are permitted subject to regulations prescribed by the Wyoming Game and Fish Commission. Fishing from within 20 yards of any boat ramp and/or dock is prohibited.
- Glass containers are prohibited in designated areas.
- We have Pay Showers.

Fishing

Buffalo Bill Reservoir, Excluding South Fork and Diamond Creek Dike Ponds in Park County:

- That portion lying west of a straight line connecting the mouths of Rattlesnake Creek and Sheep Creek (commonly known as Spring Creek) up the drainage to Gibbs Bridge is closed to fishing from April 1 through July 14.
- The creel limit on trout shall be six (6) per day or in possession. No more than two (2) shall be cutthroat trout, rainbow trout or their hybrids.
- Walleyes are designated as nongame fish.
- All Walleye caught shall be killed immediately.

North Fork of the Shoshone River drainage from Newton Creek downstream to Gibbs Bridge (including Newton Creek) in Park County.

- Closed to fishing from April 15 through June 30.

North Fork of the Shoshone River drainage upstream of Gibbs Bridge in Park County.

- The creel limit on trout shall be two (2) per day, or in possession.
- Walleye are designated as nongame fish.
- All Walleye caught shall be killed immediately.

Important Phone Numbers

Park HQ/Supt. Office
.....307-587-9227

Park Law Enforcement
..... 1-800-442-2767

Lake Shore Entrance Station
.....307-527-6274

North Fork Campground Entrance
Station307-527-6057

Buffalo Bill Dam Visitor Center
.....307-527-6076

Chamber of Commerce
(Cody Area Info)....307-587-2297

Emergency911

County Sheriff307-527-8700

Game & Fish Dept. Cody District
.....307-527-7125

Forest Service Wapiti District
.....307-527-6921

Yellowstone National Park
.....307-344-7381

Bureau of Land Management
.....307-578-5900