

## Campground Do's and Don'ts

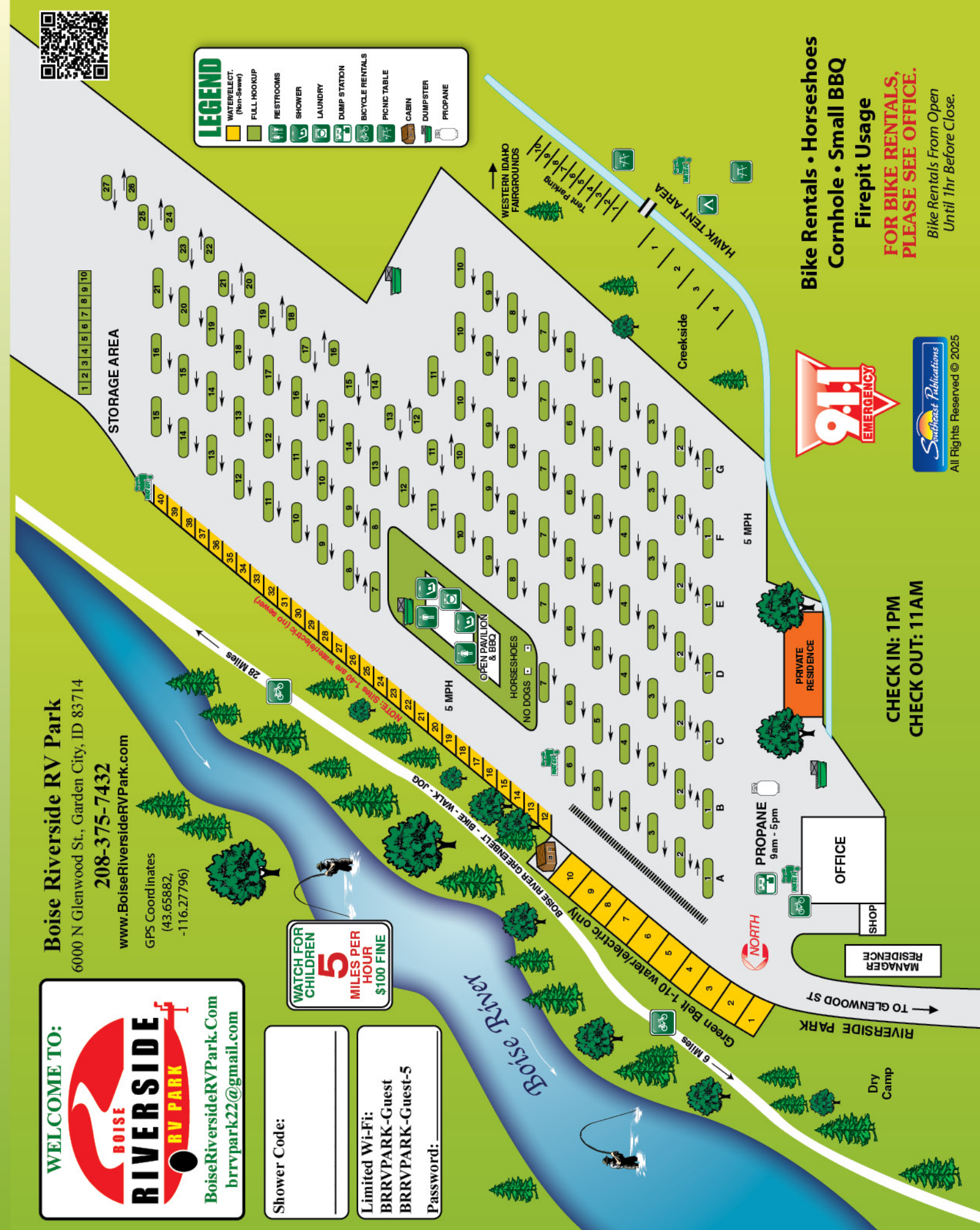
First and foremost, you do need to enjoy your stay with us. In order to assure that, certain rules must be abided by all.

- **PARK SPEED LIMIT IS 5 MPH AND IS STRICTLY ENFORCED. \$100 FINE.** Registered Guests are responsible for visitor's speeding.
- **REGISTRATION:** All campers must register at the office upon arrival or before 10 AM the following morning.
- **CHECK-OUT TIME:** Check-out time is 11 AM. If for some reason you cannot depart by this time, please contact the park office. We will be glad to work with you to extend your departure time. Late Check-Out: 2pm check-out is \$20; Later than 2pm check-out is another night's charge.
- **MAIL:** Outgoing mail may be dropped off in the office by 10 AM. We can't receive mail for guests.
- **AUTOMATIC SPRINKLER TIMES:** 2AM and 8AM (Seasonal). Place items accordingly. We cannot be responsible for damage to items left out. Anyone tampering (changing times or shutting the valve off) will be assessed a \$100 charge and asked to leave the park immediately with no refund. We have cameras that show the person(s) tampering with the sprinkler control panel. The park will not be responsible for any damages due to the tampering of the set times of our sprinkler system.
- Please **DO NOT** place mats on the grass...It Kills it.
- **QUIET HOURS** are from 10 PM to 8 AM, so enjoy, don't annoy.
- **RESTROOM & LAUNDRY FACILITY:** The restroom and laundry facilities are located at the building to the east of the office. Open 24 hours, 7 days a week. These facilities are here for your convenience, so please do your best to leave them as you found them. If you find a problem with the laundry or restrooms, please let the management know immediately.
- **CHILDREN:** Children under the age of 16 must be accompanied by an adult when using the restroom/shower facilities.
- **NO OUTDOOR REFRIGERATORS, FREEZERS, PORTABLE OR WINDOW AIR CONDITIONERS.**
- **PETS:** Pets are allowed as long as they are kept on a leash, picked up after by you, and are not an annoyance to other campers (that includes barking). Do not leave pets outside unattended.
- **PARKING & EXTRA VEHICLES:** Please do not park on concrete pads. Your vehicle parks on the right side or passenger side of your RV.
- **SOLID SEWER CONNECTIONS ARE A MUST & WATER PRESSURE REGULATORS ARE RECOMMENDED.**
- **YOU ARE RESPONSIBLE** for any damage done to the RV Park. Be it water pipes, electrical boxes, sprinklers, landscaping. Any damage done will be fined and you will be asked to leave the park.
- **WE CANNOT BE RESPONSIBLE** for loss, theft or damage to personal property.
- **DO NOT** drive or walk through empty spaces. **OUTSIDE STORAGE IS PROHIBITED.**
- **TRASH DUMPSTERS** are located next to the office, near laundry building, and at the east end of row F. Please dispose of refuse properly. \$200 fine for throwing out garbage on side of dumpster.
- **WE RESERVE THE RIGHT TO REFUSE ANY OVERNIGHT STAY IN THE PARK AT ANY TIME.**
- **NO wood fire pits or solo stoves. Propane and charcoal are permitted.**
- **FOOD DELIVERIES** must be delivered to the office, not your site; Guests must meet the delivery person at the front entrance or outside of the park. A charge of \$100 will be charged to your stay if observed not following the rules.
- **EV (Electric Vehicle) No EV charging is allowed through our pedestals.**



**LEGEND**

- WATER/ELECT. (Non-Sewer)
- FULL HOOKUP
- RESTROOMS
- SHOWER
- LAUNDRY
- DUMP STATION
- BICYCLE RENTALS
- PICNIC TABLE
- CABIN
- DUMPSTER
- PROPANE



**Boise Riverside RV Park**  
 6000 N Glenwood St., Garden City, ID 83714  
 208-375-7432  
 www.BoiseRiversideRVPark.com  
 GPS Coordinates  
 (43.65882,  
 -116.27796)

**WELCOME TO:**

BoiseRiversideRVPark.Com  
 brrrvpark22@gmail.com

**WATCH FOR CHILDREN**  
 5 MILES PER HOUR  
 \$100 FINE

Shower Code: \_\_\_\_\_

Limited Wi-Fi:  
 BRRVPARK-Guest  
 BRRVPARK-Guest-5  
 Password: \_\_\_\_\_

**Bike Rentals • Horseshoes  
 Cornhole • Small BBQ  
 Firepit Usage  
 FOR BIKE RENTALS,  
 PLEASE SEE OFFICE.  
 Bike Rentals From Open  
 Until 1hr Before Close.**



**CHECK IN: 1PM  
 CHECK OUT: 11AM**

### Things To See and Do

Because the park is surrounded by a number of fun things to do, the office staff will be glad to help you with directions, tee times, game schedules, etc.

- Our greatest amenity - The Boise River
- 27-mile long greenbelt with bike, jogging & hiking path
- Western Idaho Fairgrounds
- Boise Hawks Stadium
- The Park at Expo (Athletic Club Boise - Soccer)
- (all the above are within walking distance from the park)

### Park Amenities

- Secluded • Pull-Through Spaces • Laundry Room
- Showers • Propane On Site • Pavilion Usage with Firepit
- Dump Station • 7lb Ice Bags
- Shopping & Restaurants Within Walking Distance

### Extremely Important

Being along the river offers an abundance of wildlife. Please treat them with respect.

**Yes!**  
 We sell **PROPANE!**  
 Please check with office!

**Walk-in Urgent Care**  
Open 7 Days a Week

**Primary Health Urgent Care**

6052 W. State Street [PrimaryHealth.com](http://PrimaryHealth.com)

EARN WHILE YOU **EXPLORE WITH US**



2-Week Free RV Stays  
**GO WHERE YOU WANT**  
Commission and Additional Passive Income Opportunities

For Info:  
Erin@SE PUB.com  
1-800-832-3292

**JOIN NOW**

**RVING USA** Mobile App

Find Places & Services Every RVer Needs

Download on the App Store  
GET IT ON Google Play

**Idaho PIZZA Company**

- Pizza, Salad Bar, and Sandwiches
- Lunch Buffet (Daily 11-2pm)
- Monthly Specials
- Dine-in, Carry-out, Delivery

(208) 853-1224  
6724 N Glenwood St, Garden City  
[idahopizzacompany.com](http://idahopizzacompany.com)

**Keep America GREEN!**

**RVING USA** Preferred Business

Look for the Seal  
Support Businesses that Support Outdoor Recreation

**BOISE RIVERSIDE RV PARK**



**Services available at establishment:** 2 3 4 5

Map includes: Garden City, Boise Hawks Stadium, Western Idaho Fairgrounds, Boise State University, and various streets like State St, Chinden Blvd, and Eagle Rd.

Southwest Publications • Doug / Stahley • 02/26

**MORGAN RV REPAIR** Mobile Service

**Services:**

- Refrigerators
- Air Conditioners
- Furnaces
- Hot Water Heaters
- LP Gas Issues
- Fresh Water Systems
- Sewage/Holding Tank Issues
- Awning Repairs
- Electrical Systems
- Slide-Outs • Roofs
- Plumbing Repairs

208-488-1755  
Drew Morgan • [Drew@morganrvrepair.com](mailto:Drew@morganrvrepair.com)

**Mobile Tire Service**

Tires and more at your door!

**MOBILE TIRES**

208-572-9036  
[www.ttmobletires.com](http://www.ttmobletires.com)

**The RV Bunch**

Join us TODAY!  
[thervbunch.com](http://thervbunch.com)

Find us on: **facebook**



**E&D TRANSPORT SERVICES**

Reliable RV & Equipment Transport Services

Licensed • Insured Professional Transport

208-921-7451  
[ed-transport-services-llc.square.site](http://ed-transport-services-llc.square.site)

Create memories...

**... GO CAMPING**

**VisoneRV.com**

"World's Largest Selection of Used RV Parts/ Motorhome Parts for Sale"

(606) 843-9889  
[VisoneRV.com](http://VisoneRV.com)

Support Our Troops

**RVING USA REVIEW**

★★★★★

The Parks You Visit on

**RVINGUSA.COM**

