

WELCOME TO BEAUTIFUL LAKE ROUSSEAU!

WHERE THE SUN IS SHINING, THE FISH ARE BITING, AND THE GUESTS ARE ALWAYS GLAD TO BE HERE! Upstream from us, the clear, spring-fed Rainbow River flows into the Withlacoochee River. Together, they form Lake Rousseau. Because of the constant flow of fresh water, the level of the lake seldom varies more than six inches. So, wet season or dry, the fishing is great. Several largemouth bass in the 10-pound range are caught in this area every year, and there's an abundant supply of shellcracker, bluegill, bream, crappie, and catfish as well. Two miles downriver, you can launch your boat and reach the Gulf of Mexico in about five miles or so. Saltwater access or fresh, we've got it all! The only thing we don't have is "no-see-ums," an aggravating cousin of the mosquito family, so you don't have to spend your time scratching, leaving you more time to drown worms. We're so glad to have you visit, and we hope you'll enjoy your stay!

The Stewart Family
Purveyors of Winter Warmth & Summer Shade

GOT PROPANE??? We'll be glad to top off your tank before you park. Park model tanks are serviced by delivery truck on a regular schedule. Small tanks and fixed motorhome tanks are filled by park personnel all thru the week. Just set your tank out and we'll pick it up and deliver it back to you.
HOST CAMPERS on designated sites are available to help with problems after hours.
CATCH A FISH YOU'RE PROUD OF? Let us know so we can take your picture and post it on our Brag Board and Facebook!
CHECK THE ACTIVITY CALENDAR AND SIGN UP SHEETS IN THE OFFICE AND MAIN REC HALL.

Winter Activities

- Bonfires
- Annual Luau • Holiday Dinners/Parties
- Bingo • Poker • Texas Hold 'Em
- Planned Social Activities
- Christmas Yankee Swap
- Pot Luck Dinners • Breakfasts
- Church Services • Bible Study
- New Year's Eve Party
- Sunrise Over The Cove
- Sunset Over The Lake

Summer Activities

- Community Cookouts
- Campfires
- Local Outings
- Bingo & Poker
- Bible Study
- Holiday Weekend Celebrations with Children's Activities

Amenities

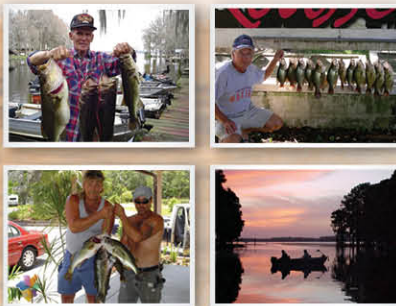
- Tackle & Bait Shop
- General Store
- Heated Swimming Pool
- Cable TV
- Boat Slips/Boat Ramp
- LP Gas
- Free Wi-Fi Access (Limited)
- BBQ Grill/Picnic Area
- Canoe & Kayak Rentals
- Friendly Neighbors

Things To Do And See

In addition to park services, there are many churches within driving distance; we'll be glad to give you directions to one of your choice. In the office you will find brochures and information about many places of interest in the area. Please patronize our advertisers. There are numerous festivals featuring seafood, strawberries, manatees, and local history; and several flea markets, boat tours, horseback riding, a bird-watching trail and a wildlife park. Both Dunnellon and Crystal River have historic districts and offer a variety of dining options. Our proximity to the Gulf of Mexico brings access to scallop season and a wonderful opportunity to watch or swim with the manatees!

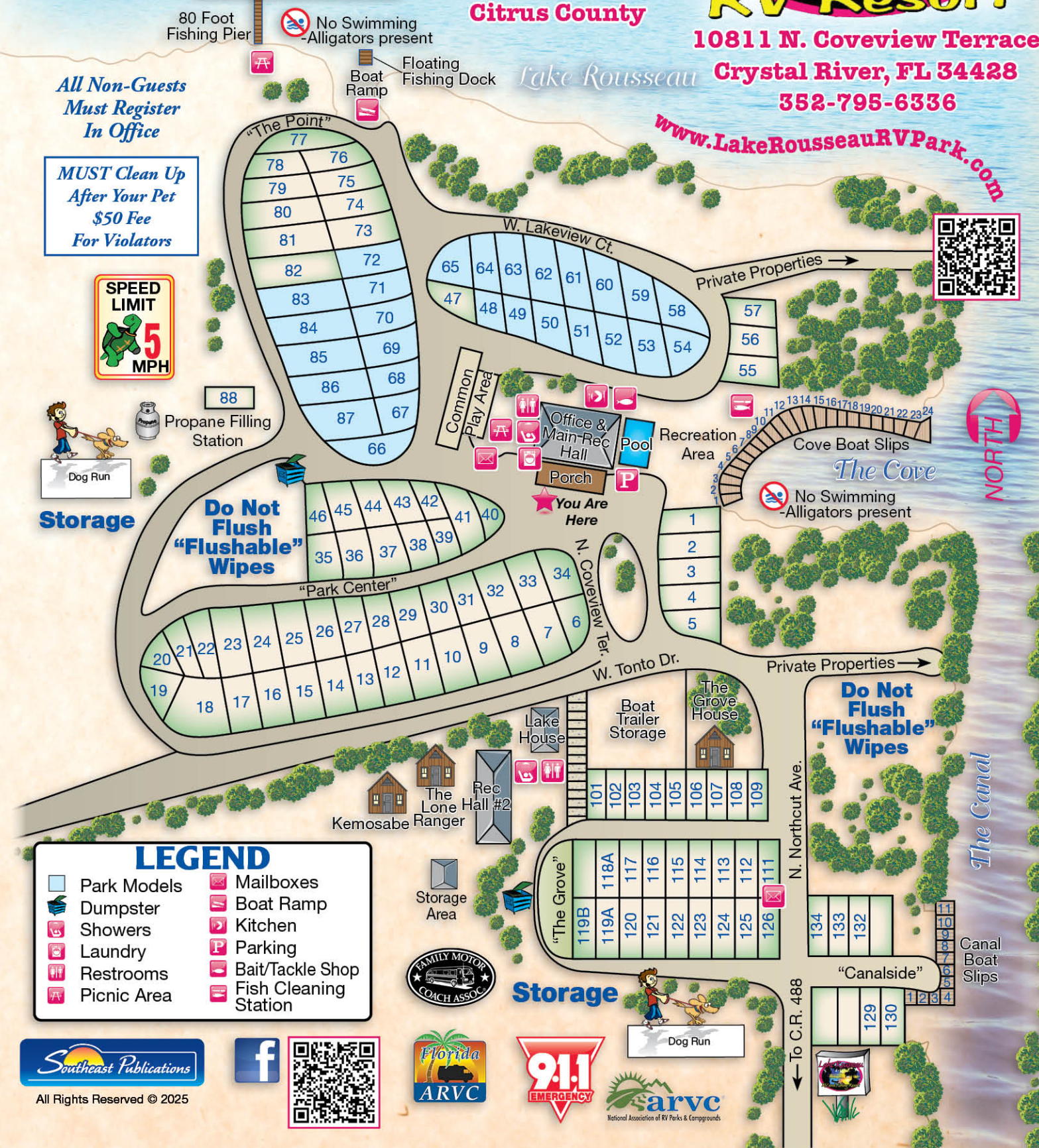
Park Etiquette

1. **Check-out time:** 11:00 a.m.
Check-in time: 1:00 p.m.
Quiet hours: 10:00 p.m.-7:00 a.m.
2. Please **register** only for the time you are sure you will stay. **There are no refunds** after check-in for unused portions of your stay.
3. **Site rent** is for 1 RV, 1 tow vehicle and a maximum of 6 people. **Extras?** Please check with office.
4. **Motorized vehicle** and golf cart operation requires valid driver's license.
5. **Fires:** Citrus County forbids open fires on the ground. We rent fire rings and sell firewood. Remember to extinguish your fire before you leave it.
6. **Pets:** Max. 2 dogs per site. Must be leashed and picked up after. No tying up outside, and no excessive barking allowed.
7. **DO NOT FLUSH** moist wipes of any type, even "flushable" ones; they must go in the trash.
8. **Sewer donuts** are required by Dept. of Health. Please recap sewer upon departure.
9. **No parking** at the boat ramp. Leave your boat trailer and vehicle at the west end of the office building. Posted launch fee is for out-of-park guests only.
10. **Pool hours:** Approximately 10:00 a.m. to Dusk. **Pool safety:** No glass around pool. No lifeguard on duty; swim at your own risk. Children under 12 require adult supervision.
11. **Laundry open 24 hours.** Lights are on a timer. No clotheslines allowed.
12. **Restrooms and showers** are open 24 hours; lights are on a timer. We take great pride in keeping these facilities clean and well stocked for you. Thank you for letting us know of any problems.
13. **No swimming in lake due to alligator habitat.** Children 12 and under must have adult supervision when near lake.
14. **Guests unwilling to abide by park rules or common courtesy will be asked to leave.** No drug use, weapons, or objectionable behavior will be tolerated.
15. **No tent camping.** See office before driving any stakes on RV sites for any reason.
16. **Surge protectors required.** Steps:
A. Make sure breaker is off.
B. Plug in.
C. Turn on breaker.



10811 N. Coveview Terrace
Crystal River, FL 34428
352-795-6336

www.LakeRousseauRVPark.com



All Non-Guests Must Register In Office

MUST Clean Up After Your Pet \$50 Fee For Violators

SPEED LIMIT 5 MPH

Do Not Flush "Flushable" Wipes

LEGEND

Park Models	Mailboxes
Dumpster	Boat Ramp
Showers	Kitchen
Laundry	Parking
Restrooms	Bait/Tackle Shop
Picnic Area	Fish Cleaning Station

Southwest Publications
All Rights Reserved © 2025



Tahoe MayCraft STINGRAY Continental Custom

SERVING THE NATURE COAST FOR OVER 30 YEARS!

THREE RIVERS MARINE

352-563-5510
1038 N SUNCOAST BLVD.
CRYSTAL RIVER, FL 34429
WWW.THREERIVERSMARINEINC.COM

SUZUKI HONDA MARINE YAMAHA

CRYSTAL RIVER MARINE

352-795-2597
990 N SUNCOAST BLVD.
CRYSTAL RIVER, FL 34429
WWW.CRYSTALRIVERMARINE.COM

SALES*SERVICE*PARTS
STORAGE*BOTTOM PAINTING

SUZUKI HONDA MARINE YAMAHA

BEST OF THE BEST 2024 WINNER

DORY SeaSport Salt Creek TWIN VEE

1a 1b

REVIEW

RVING USA ★★★★★

The Parks You Visit on

RYINGUSA.COM

Buddy and Fred's Hardware.com

Your Local Hardware Store with RV Supplies & More

352-447-2600

Food Ranch Plaza, Inglis

Help Keep America BEAUTIFUL!

Support Our Troops

Swamp Fever Airboat Adventures

www.swampfeverairboatadventures.com

352 643-0708

"CATCH THE FEVER"

Located at Idlewild Lodge
4110 NW 42nd PL • Lake Panasoffee, FL

Join US TODAY!

The RV Bunch

Find us on facebook.

thervBunch.com

Map of Lake Rousseau RV Resort area with numbered locations 1a, 1b, 2, 3, 4, 5, 6, and 7.

YANKEETOWN INGLIS DUNNELLON Ocala GENERAL RV CENTER

Lake Rousseau RV Resort

LAKE PANASOFFEE

CRYSTAL RIVER

INVERNESS

Gulf of Mexico

All Rights Reserved ©
• Maps Not To Scale

Southwest Publications • Nicki M. / Roberts • 7/25

Printed in the USA

Al's TV

ANTENNA & SATELLITE

SALES & SERVICE SINCE 1973

352-489-5676

www.Alstvdish.com

SPECIALIZING IN RVs

High Speed Internet

dish PREMIER LOCAL RETAILER

PROUD TO BE AN AMERICAN

CRYSTAL RIVER FAST LUBE & REPAIR

Home of the 15 Minute Oil Change

18 Point Visual Inspection
Free with Your Oil Change!

We also service your car with light mechanical work, such as Serpentine Belts, tune-ups and much more!

Formerly Mobil1 - same crew new products

We Feature Valvoline

352-795-2333

1050 S.E. US-Hwy 19 • Crystal River, FL 34429

Create memories...

... GO CAMPING

Griffin's Tree Care

Specializing In:

- Tree Removal & Trimming
- Bobcat & Crane Service
- HAZARDOUS TREES
- Stump Grinding

352-249-6495

24 Hour Emergency Service

www.GriffinsTreeCare.com

LICENSED & INSURED
FREE ESTIMATES
WORKERS COMP

EXPLORE AMERICA

Welcome to FLORIDA...

The Sunshine State

FLORIDA'S PREMIER RV DEALER

RV SALES | PARTS | SERVICE

SCAN TO LOCATE A SUPERCENTER NEAR YOU

GeneralRV.com

Citrus RV

MOBILE RV SERVICE

352-302-1742

RVING USA Mobile App

Find Places & Services Every RVer Needs

Download on the App Store

GET IT ON Google Play

GENERAL RV CENTER